

# ***Hustler Z CE Parts Manual***



**HUSTLER**  
.....

*Hustler Turf Equipment*

.....

*P.O. Box 7000*

...

*Hesston, Kansas*

•

67062-2097



---

# Table of Contents

<b>Section 1</b>	
General Information . . . . .	1-1
<b>Section 2</b>	
Rivet Nut Installation . . . . .	2-2
Footrest Assembly . . . . .	2-3
<b>Section 3</b>	
Hydraulic System Installation—S/N 07120009 & Higher . . . . .	3-2
Hydraulic System Installation—S/N Prior to 07120009 . . . . .	3-6
<b>Section 4</b>	
Battery Installation . . . . .	4-2
Deck Lift Assembly . . . . .	4-4
Steering and Park Brake Assembly . . . . .	4-6
Steering Sub-Assembly . . . . .	4-9
Pump Belt and Pulleys Installation . . . . .	4-10
<b>Section 5</b>	
Kawasaki Engine Installation (Remote Air Cleaner) . . . . .	5-2
Fuel System Installation . . . . .	5-6
Instrument Panel Assembly . . . . .	5-8
Electrical Schematic (799320) . . . . .	5-10
<b>Section 6</b>	
Front Wheel Assembly . . . . .	6-2
Front Wheel Breakdown—747782 . . . . .	6-4
Optional Semi-Pneumatic Tire/Wheel—789537 . . . . .	6-5
Drive Wheel Assembly Installation . . . . .	6-6
Anti-Rollover Wheel Assembly . . . . .	6-7
<b>Section 7</b>	
54" Side Discharge XR7 Deck Assembly . . . . .	7-2
54" Side Discharge Deck Mulch Baffles . . . . .	7-6
54" Rear Discharge Deck Assy—S/N 08100000 & Higher . . . . .	7-8
54" Rear Discharge Deck Assy—S/N 08010000—08100000 . . . . .	7-10
54" Rear Discharge Deck Assy—S/N Prior to 08010000 . . . . .	7-12
54" Rear Disch. Deck Pulley Assy—S/N 08100000 & Higher . . . . .	7-14
54" Rear Discharge Deck Pulley Assy—S/N Prior to 08100000 . . . . .	7-16
Spindle Assembly—796235 . . . . .	7-18
Spindle Assembly—796680 . . . . .	7-19
<b>Section 8</b>	
Deck Installation . . . . .	8-2
54" Side Disch. Deck Belt Routing & Tensioning . . . . .	8-4
54" Rear Disch. Deck Belt Routing & Tensioning . . . . .	8-5
Seat Installation—S/N 09120554 & Higher . . . . .	8-6
Seat Installation—S/N 08010000—09120554 . . . . .	8-8
Seat Installation—S/N Prior to 08010000 . . . . .	8-10

---

ROPS Installation .....	8-12
<b>Section 9</b>	
Mower Decals .....	9-2
60" Side Discharge XR7 Deck Decals .....	9-4
54" Side Discharge XR7 Deck Decals .....	9-5
54" Rear Discharge Deck Decals .....	9-6
Index .....	i-1

# Section 1

## **General Information**

This Manual covers Hustler Z models **927723CE, 927731CE, and 928432CE**, with serial numbers higher than 07020000.

---

## **Frequently Ordered Parts**

<b>PART NO.</b>	<b>DESCRIPTION</b>
768341	Hydraulic Oil Filter
781443	Pump Drive Belt
797696	Blade, F18.50"-H-F-CW (54" Side Discharge Deck)
794685	Blade, F20.50"-H-F-CW (60" Side Discharge Deck)
601012	Blade, F18.50"-L-F-CW (54" Rear Discharge Deck)
601013	Blade, F18.50"-L-F-CCW (54" Rear Discharge Deck)
797928	Belt, B-Section (54" Side Discharge Deck)
797720	Belt, B-Section (60" Side Discharge Deck)
601015	Belt, B-Section (54" Rear Discharge Deck)
068478	Fuel Filter
785261	Main Air Filter Element (Including Kaw. 29 HP w/ S/N after 10062339)
785279	Safety Air Filter Element (Kaw. 25 HP w HD & 29 HP w/ S/N after 10062339)
601652	Main Filter Element (Kaw. 29 HP w/ S/N prior to 10062339)
601653	Safety Filter Element (Kaw. 29 HP w/ S/N prior to 10062339)
772079	Kawasaki Engine Oil Filter

---

## **Service Literature**

<b>PART NO.</b>	<b>DESCRIPTION</b>
799411CE	Owner's Manual
778423	Kawasaki 19–25 hp Engine Owner's Manual

---

*Note: When ordering parts, you must use the part number as shown for each part, not the index number. Always give the model and serial number to your parts and service representative.*

*Note: Items sold in bulk such as seals and hoses are sold by the foot.*

---

## **Using this manual**

Illustrations used were current at the time of printing, but subsequent production changes may cause your machine to vary slightly in detail. Excel Industries, Inc. reserves the right to redesign and change the machine as deemed necessary, without notification. If a change has been made to your machine which is not reflected in this parts manual, see your Hustler dealer for current information and parts.

## **Hardware Description Codes & Abbreviations**

The following codes are used throughout this parts manual. Refer to this list when ordering parts.

<b>ABBREVIATION</b>	<b>DESCRIPTION</b>	<b>ABBREVIATION</b>	<b>DESCRIPTION</b>
CB	Carriage Bolt	MB	Machine Bushing
CE	Clevis Pin	MS	Machine Screw
CP	Cotter Pin	NT	Nut
CS	Cap Screw	SC	Self Tapping Cap Screw
CW	Cup Washer	SH	Socket Head
FDRW	Fender Washer	SB	Shoulder Bolt
FW	Flat Washer	SS	Set Screw
HX	Hex Head	OD	Outside Diameter
LW	Lock Washer	ID	Inside Diameter

---

## **Standard Torques**

The following chart lists the standard torque values for the threaded fasteners found in this manual. Torque all cap screws, nuts and set screws to these values unless a different torque is shown in the Notes section next to the fastener.

<b>SIZE</b>	<b>FT-LBS</b>	<b>NM</b>	<b>SIZE</b>	<b>FT-LBS</b>	<b>NM</b>
.250	8.2	11.1	M3	1	1.3
.312	17	23	M4	2.2	3
.375	30	40	M5	4.5	6.1
.438	48	65	M6	7.7	10.4
.500	73	99	M8	18.5	25
.562	105	143	M10	37	50
.625	145	200	M12	64	87
.750	260	350	M14	80	108.5
.875	420	565	M16	160	215
1.00	625	850	M20	320	435
			M24	555	750

### **NOTE:**

**Loctite® 592 to be used on all pipe threads.**

**Lubricate all grease zerks.**

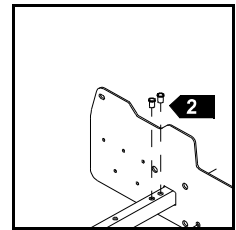
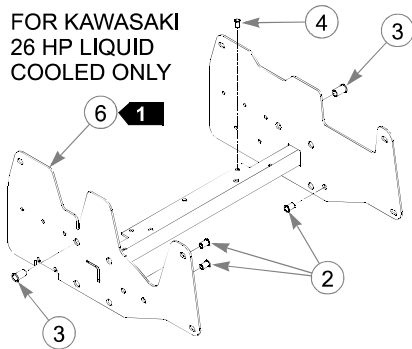
---

## Section 2

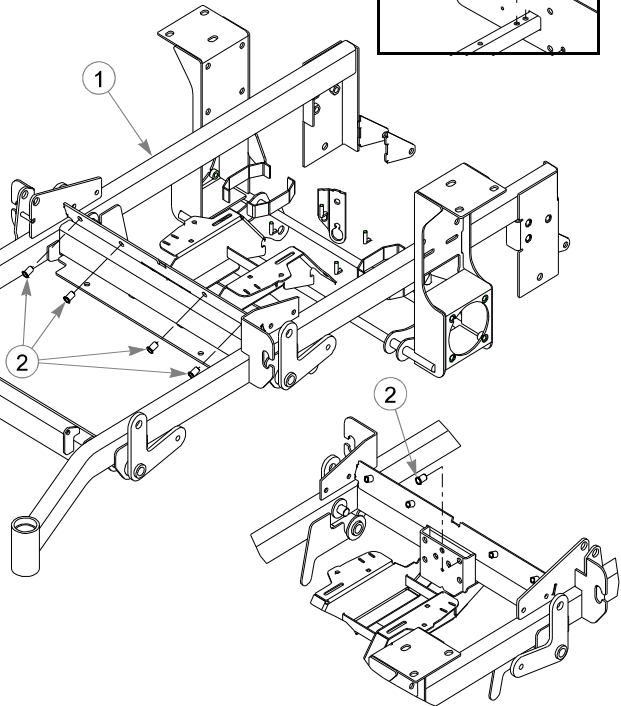
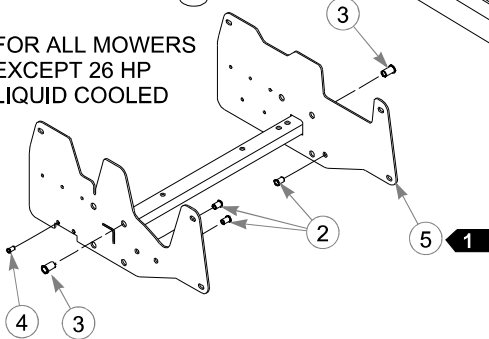
Rivet Nut Installation .....	2-2
Footrest Assembly .....	2-3

## **Rivet Nut Installation**

FOR KAWASAKI  
26 HP LIQUID  
COOLED ONLY



FOR ALL MOWERS  
EXCEPT 26 HP  
LIQUID COOLED



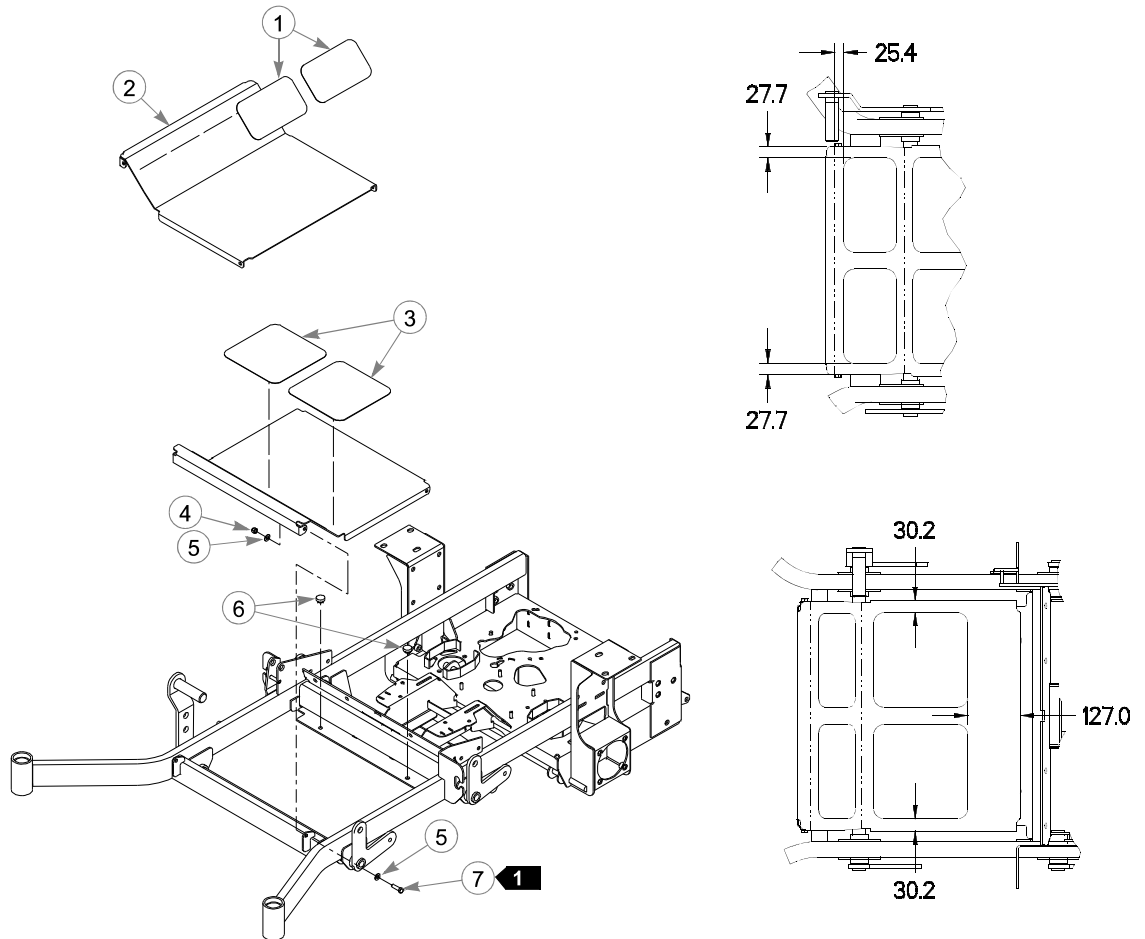
ITEM NO.	SERVICE PART NO.	MFG. PART NO.	QTY.	DESCRIPTION
1	548032	107701	1	MOWER FRAME (54" SIDE DISCHARGE)
	547760	106211	1	MOWER FRAME (60" SIDE DISCHARGE)
	547752	106039	1	MOWER FRAME (66" SIDE DISCHARGE)
	548545	108093	1	MOWER FRAME (54" REAR DISCHARGE)
2	808493	808493	13	3/8-16 THREAD RIVET NUT
3	600961	600961	8	1/2-13 THREAD RIVET NUT
4	808477	808477	2	1/4-20 THREAD RIVET NUT (KAW AIR COOLED ONLY)
4	808477	808477	3	1/4-20 THREAD RIVET NUT (KAW LIQUID COOLED ONLY)
5	547950	106732	1	XR7 MMZ SEAT SUPPORT
	549303	109678	1	SEAT SUPPORT

### **NOTES:**

1. Seat support 547950 includes rivet nuts.
2. Mowers with serial numbers prior to 08010000 require (2) of 808493 (Rivet Nut 3/8-16 thread).



# Footrest Assembly



ITEM NO.	SERVICE PART NO.	MFG. PART NO.	QTY	DESCRIPTION
1	359547	359547	2	STEP TREAD
2	395533	395533	1	FLOOR
3	305615	305615	2	PLATFORM STEP TREAD
4	086660	086660	2	NT .375-16 HX LK NY
5	767954	767954	4	FW .406 X .812 X .060 SAE HD ZN
6	781880	781880	2	RUBBER BUMPER
7	052860	052860	2	CS .375-16 X 1.250 HX G5 ZN

## NOTES:

1. Do not tighten, Item 2 (348276 Floor) must be able to pivot on these bolts.

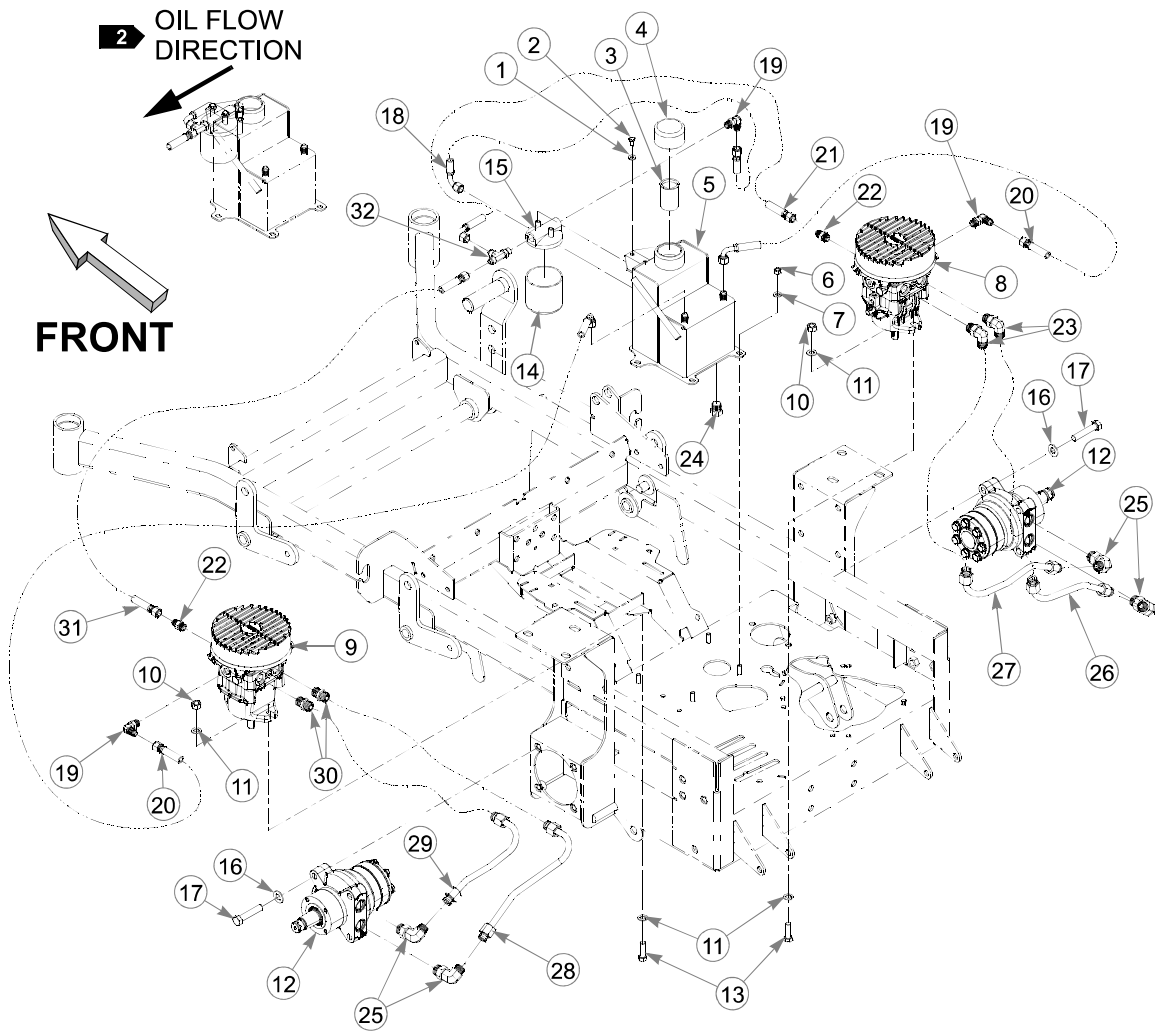
---

---

## Section 3

Hydraulic System Installation—S/N 07120009 & Higher . . . . .	3-2
Hydraulic System Installation—S/N Prior to 07120009 . . . . .	3-6

# Hydraulic System Installation—S/N 07120009 & Higher



## Hydraulic System Installation—S/N 07120009 & Higher

ITEM NO.	SERVICE PART NO.	MFG. PART NO.	QTY	DESCRIPTION
1	768515	768515	2	FW .281 X .625 X .051/.080 HD ZN/YL
2	055947	055947	2	CS .250-20 X .500 HX G5 ZN
3	032771	032771	1	STRAINER
4	032763	032763	1	BREATHER CAP
5	548636CE	349860	1	RESERVOIR
6	034272	034272	4	NT .312-18 HX G5 ZN
7	768523	768523	4	FW .343 X .687 X .051/.080 HD ZN/YL
8	601133	601133	1	PUMP, HYD 12CC W/ FAN RH
9	601134	601134	1	PUMP, HYD 12CC W/ FAN LH
10	041707	041707	4	NT .437-14 HX G5 ZN
11	704742	704742	8	FW .453 X .812 X .060 ZN
12	602382	602382	2	MOTOR, TF0240 PARKER
<b>4</b>	600922	600922	2	MOTOR, HGM-15E-3138
13	705186	705186	4	CS .437-14 X 1.375 HX G5 ZN
14	768341	768341	1	FILTER ELEMENT
15	768333	768333	1	FILTER HEAD
16	767962	767962	8	FW .531 X 1.063 X .090 SAE
17	008573	008573	8	CS .500-13 X 2.500 HX G5
18	781575	N/A	1	-6STR -6 90°, PUSHLOC HOSE 4.75"
19	763946	N/A	3	90°, -6 O-RING/-6 JIC FITTING
20	601252	N/A	2	CASE DRAIN ASSY
21	781591	N/A	1	-6STR -6 90°, PUSHLOC HOSE, 15.00"
22	779132	N/A	2	STR-6MORB/-6JIC FITTING
23	781542	N/A	2	90°, -8MORB/-8MSL FITTING
24	781658	N/A	1	STR-8-MORB/HEX PLUG
25	781526	N/A	4	90°, -10MORB/-8MSL FITTING
26	781500	N/A	1	RIGHT LOOP/RP-BM HYDRO TUBE
27	600915	N/A	1	TUBE, LP-TM RT LOOP
28	781484	N/A	1	LEFT LOOP/RP-BM HYDRO TUBE
29	781476	N/A	1	LEFT LOOP/LP-TM HYDRO TUBE
30	781534	N/A	2	STR-8MORB/-8MSL FITTING
31	781518	N/A	1	-6STR -6STR PUSHLOC HOSE, 9.00"
32	763953	N/A	1	-6 O-RING/-6JIC/6JIC T FITTING
	N/A	600913	1	HYDRAULIC KIT (INCLUDES 16-31)

### NOTES:

1. Hydraulic system capacity is 4.732 L of 20W50 motor oil. Fill reservoir to within 25.4 mm of top of Item 3 (032771 Strainer).
2. Orient Item 15 (Filter Head) to achieve proper oil flow direction.
3. Hydraulic pump serviceable parts include:

SERVICE PART NO.	DESCRIPTION
772756	OVERHAUL BDP1 SEAL KIT
601877	PUMP FAN SHROUD
601878	PUMP FAN KIT
601879	PUMP SHROUD BRACKET

- 
4. Used between S/N 07120009 & 09102031.

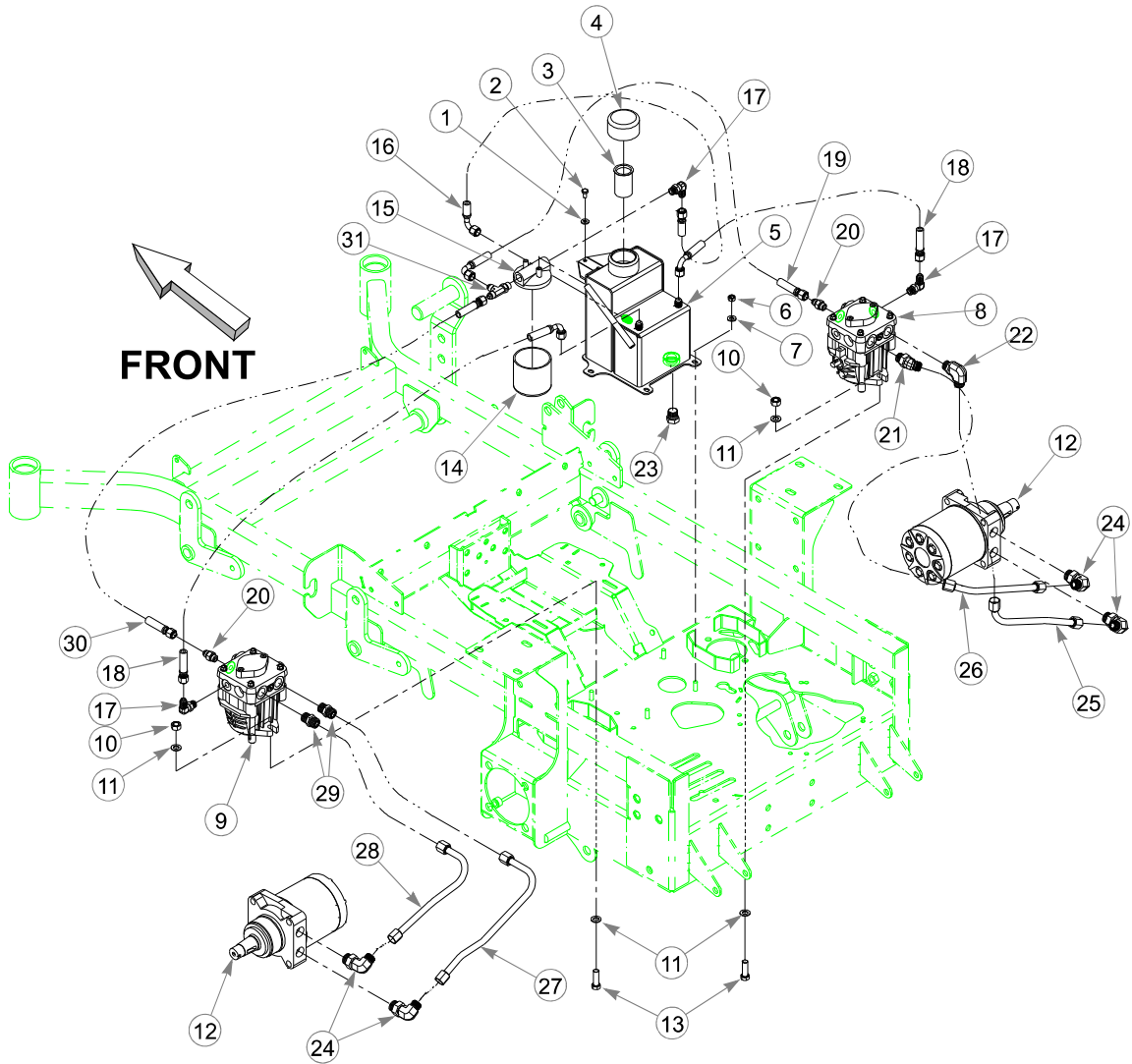
**HYDRAULIC SYSTEM CHARGING PROCEDURE**

1. Set handles in the neutral position.
2. Start engine at idle.
3. Let run for a minimum of 30 seconds.
4. Stroke handles to forward position.
5. If motors do not turn in 15 seconds return handles to neutral and repeat step 3 and 4 (one time).
6. If motors do not turn after second attempt, shut off the engine and check for oil at the pump.
7. Increase throttle to half speed and work handles through forward and reverse position until the motor operates smoothly throughout the entire speed range.

---

**This page intentionally left blank.**

# Hydraulic System Installation—S/N Prior to 07120009





## **Hydraulic System Installation—S/N Prior to 07120009**

ITEM NO.	SERVICE PART NO.	MFG. PART NO.	QTY	DESCRIPTION
1	768515	768515	2	FW .281 X .625 X .051/.080 HD ZN/YL
2	055947	055947	2	CS .250-20 X .500 HX G5 ZN
3	032771	032771	1	STRAINER
4	032763	032763	1	BREATHER CAP
5	548636CE	349860	1	RESERVOIR
6	034272	034272	4	NT .312-18 HX G5 ZN
7	768523	768523	4	FW .343 X .687 X .051/.080 HD ZN/YL
8	781062	781062	1	HYDRO-GEAR PUMP, BDP-10A-300
9	781047	781047	1	HYDRO-GEAR PUMP BDP-10A-400
10	041707	041707	4	NT .437-14 HX G5 ZN
11	704742	704742	8	FW .453 X .812 X .060 ZN
12	781054	781054	2	ROSS/PARKER WHEEL MOTOR, MB-15
13	705186	705186	4	CS .437-14 X 1.375 HX G5 ZN
14	768341	768341	1	FILTER ELEMENT
15	768333	768333	1	FILTER HEAD
16	781575	N/A	1	-6STR -6 90°, PUSHLOC HOSE 4.75"
17	763946	N/A	3	90°, -6 O-RING/-6 JIC FITTING
18	778985	N/A	2	-6STR -6 90°, PUSHLOC HOSE, 13.00"
19	781591	N/A	1	-6STR -6 90°, PUSHLOC HOSE, 15.00"
20	779132	N/A	2	STR-6MORB/-6JIC FITTING
21	781559	N/A	1	45°, -8MORB/-8MSL FITTING
22	781542	N/A	1	90°, -8MORB/-8MSL FITTING
23	781658	N/A	1	STR-8-MORB/HEX PLUG
24	781526	N/A	4	90°, -10MORB/-8MSL FITTING
25	781500	N/A	1	RIGHT LOOP/RP-BM HYDRO TUBE
26	781492	N/A	1	RIGHT LOOP/LP-TM HYDRO TUBE
27	781484	N/A	1	LEFT LOOP/RP-BM HYDRO TUBE
28	781476	N/A	1	LEFT LOOP/LP-TM HYDRO TUBE
29	781534	N/A	2	STR-8MORB/-8MSL FITTING
30	781518	N/A	1	-6STR -6STR PUSHLOC HOSE, 9.00"
31	763953	N/A	1	-6 O-RING/-6JIC/6JIC T FITTING
	N/A	781469	1	MMZ HYDRAULIC KIT (INCLUDES 16-31)

### NOTES:

1. Hydraulic system capacity is 4.732 L of 20W50 motor oil. Fill reservoir to within 25.4 mm of top of Item 3 (032771 Strainer).
2. Reference note 2 on "Hydraulic System Installation—S/N 07120009 & Higher" on page 3-2 for the proper oil flow direction and orientation of Item 15.

### HYDRAULIC SYSTEM CHARGING PROCEDURE

1. Set handles in the neutral position.
2. Start engine at idle.
3. Let run for a minimum of 30 seconds.
4. Stroke handles to forward position.

- 
5. If motors do not turn in 15 seconds return handles to neutral and repeat step 3 and 4 (one time).
  6. If motors do not turn after second attempt, shut off the engine and check for oil at the pump.
  7. Increase throttle to half speed and work handles through forward and reverse position until the motor operates smoothly throughout the entire speed range.

**Note:**

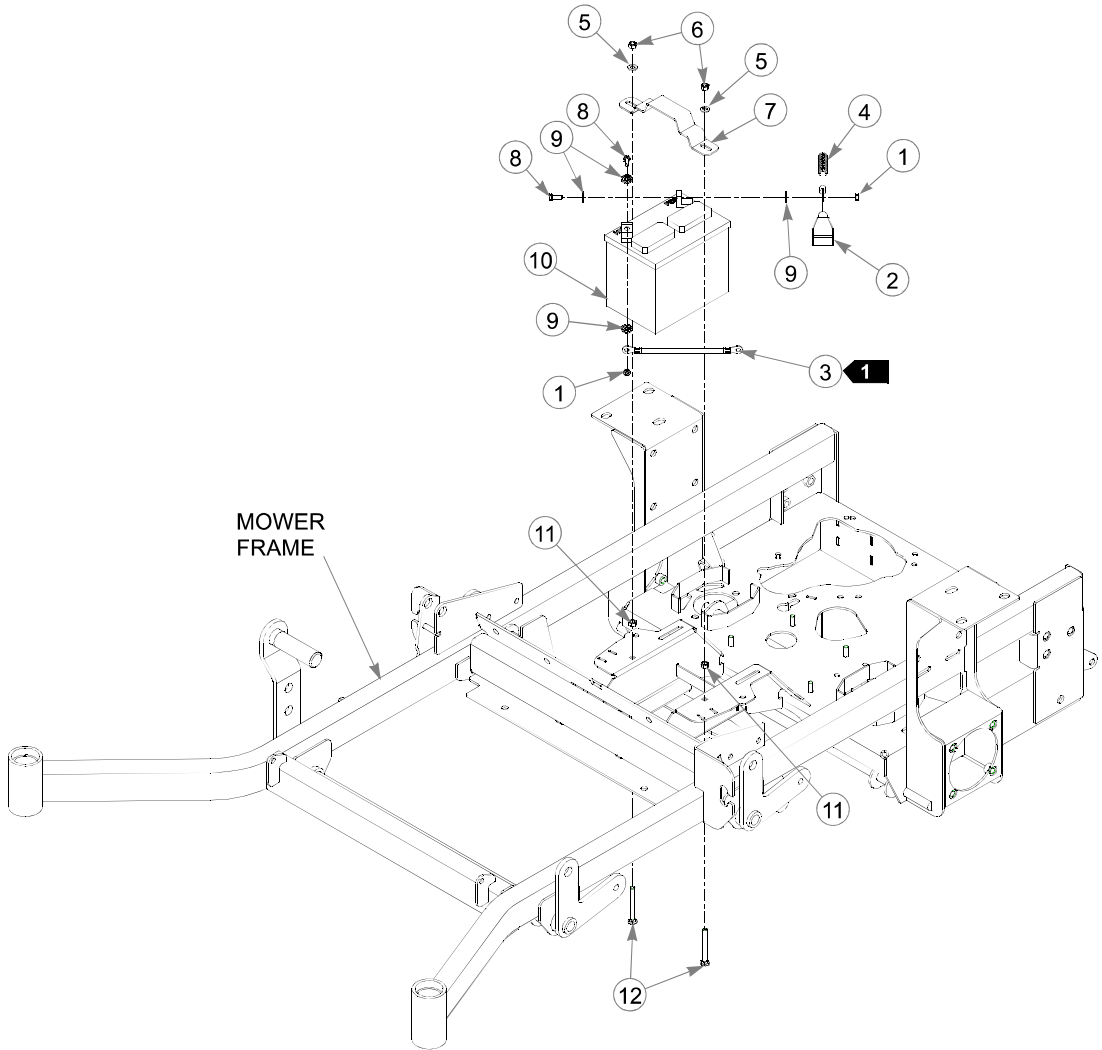
Seal Kit for hydraulic pump; 727756 (BDP10 Overhaul Seal Kit)

---

## Section 4

Battery Installation . . . . .	4-2
Deck Lift Assembly . . . . .	4-4
Steering and Park Brake Assembly . . . . .	4-6
Steering Sub-Assembly . . . . .	4-9
Pump Belt and Pulleys Installation . . . . .	4-10

# **Battery Installation**



---

## **Battery Installation**

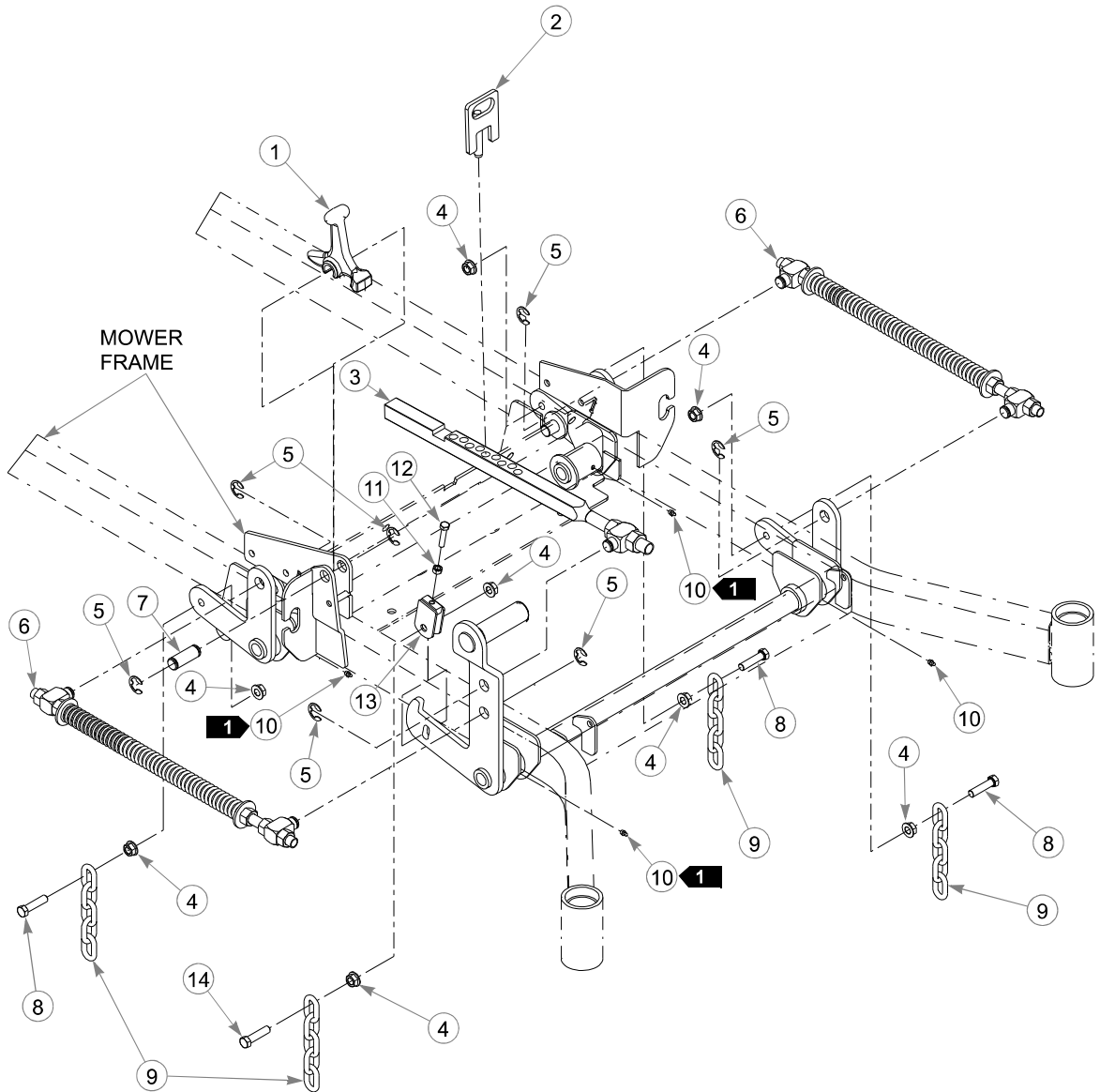
ITEM NO.	SERVICE PART NO.	MFG. PART NO.	QTY	DESCRIPTION
1	024927	024927	2	NT .250-20 HX GR.5 ZN
2	771428	771428	1	RED BATTERY CABLE BOOT
3	796219	796219	1	36" NEGATIVE BATTERY CABLE
4	744276	744276	1	POSITIVE BATTERY CABLE
5	768523	768523	3	FW .343 X .687 X .051/.080 HD ZN/YL
6	058776	058776	2	NT .312-18 HX NL ZN
7	348417	348417	1	BATTERY CLAMP STRAP
8	055939	055939	2	CS .250-20 X .750 HX G5 ZN
9	029868	029868	4	LW .250 INT-EXT TOOTH ZN
10	740696	740696	1	BATTERY
11	034272	034272	2	NT .312-18 HX G5 ZN
12	779850	779850	2	CB .312-18 X 3.00 FUL ZN

---

### **NOTES:**

1. When performing service on mower, disconnect battery ground cable and do not reconnect to battery until engine is ready to be started. See Owners Manual.
2. Battery is not installed in export models.

# Deck Lift Assembly



---

## **Deck Lift Assembly**

<b>ITEM NO.</b>	<b>SERVICE PART NO.</b>	<b>MFG. PART NO.</b>	<b>QTY</b>	<b>DESCRIPTION</b>
1	348318	348318	1	STOP HANDLE
2	600437	600437	1	DECK HEIGHT 1/2" PIN W/A
3	783001	783001	1	DECK LIFT INDICATOR SUBASSEMBLY
4	704643	704643	8	NT .437-14 HX FLG ZN
5	781294	781294	7	CLIP E, 1.00 X .625 X .050
6	782995	782995	2	DECK LIFT SPRING SUBASSEMBLY
7	781229	781229	1	CE .750 X 2.25 X 1.75 HEADLESS
8	055749	055749	3	CS .437-14 X 1.750 HX G5 ZN
9	348391	018846	4	DECK LIFT CHAIN
10	015495	015495	4	STRAIGHT GREASE FITTING
11	034272	034272	1	NT .312-18 HX G5 ZN
12	756270	756270	1	CS .312-18 X 1.50 FUL THR GR5 ZN
13	348458	348458	1	DECK LEVELER YOKE
14	781831	781831	1	CS .437-14 X 1.750 FUL THD G5 ZN

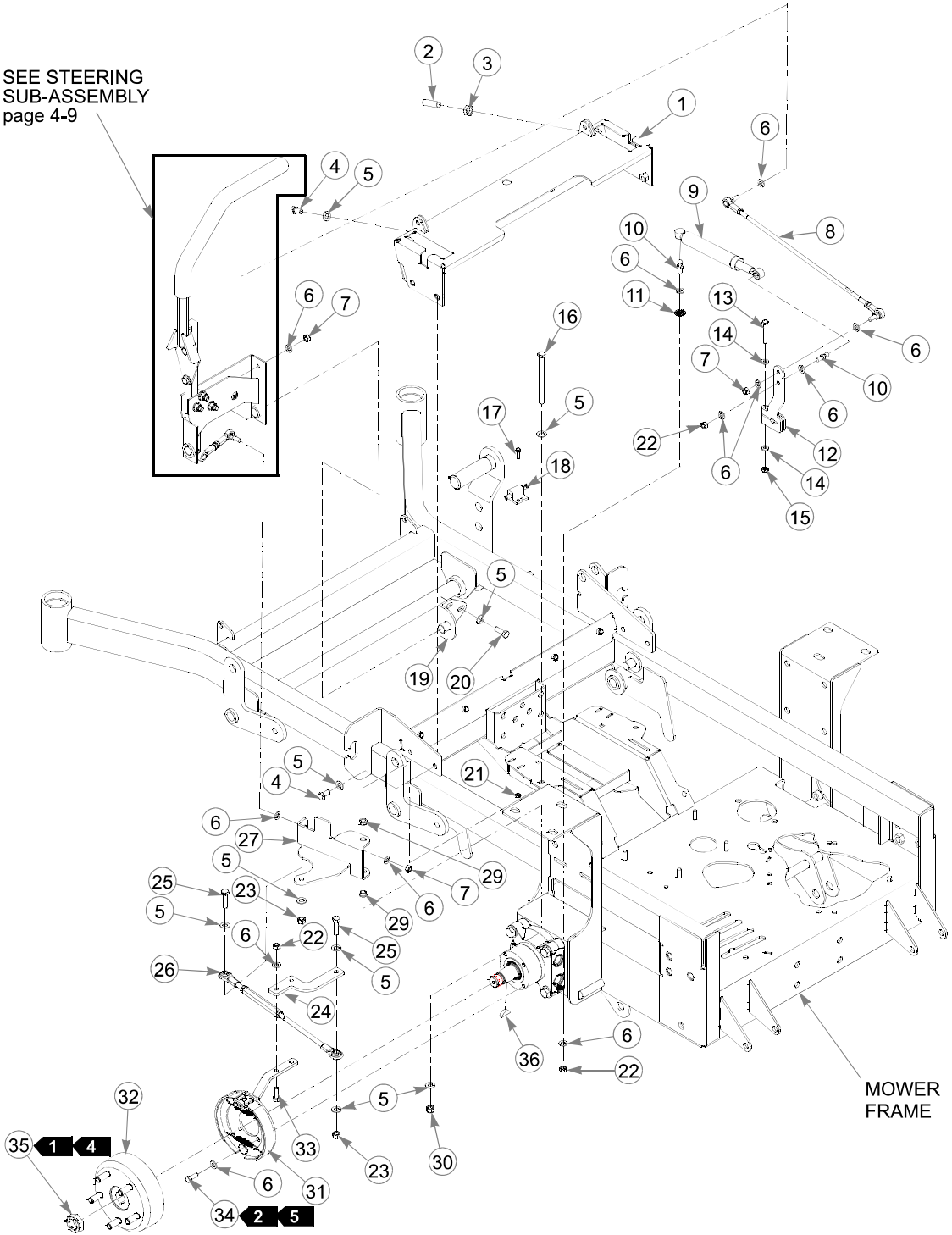
---

### **NOTES:**

1. Apply grease to zerks (see owner's manual).

# Steering and Park Brake Assembly

SEE STEERING  
SUB-ASSEMBLY  
page 4-9





## Steering and Park Brake Assembly

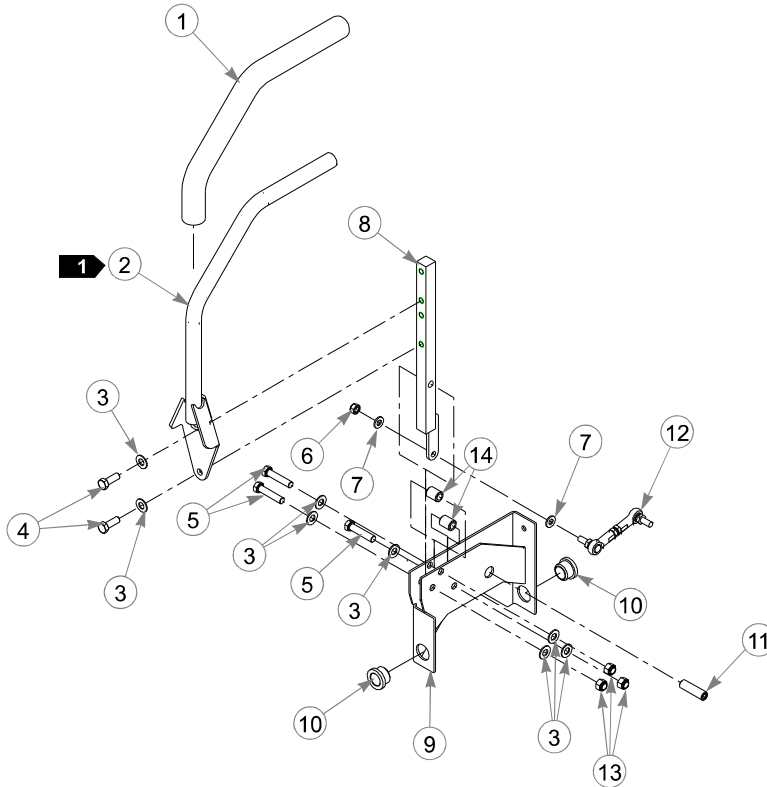
ITEM NO.	SERVICE PART NO.	MFG. PART NO.	QTY	DESCRIPTION	
	1	348987	348987	1	STEERING CONTROL PANEL
	2	781716	781716	2	SS .500-13 X 1.75 SH ZN
	3	053199	053199	2	NT .500-13 HX JAM ZN
	4	055822	055822	8	CS .375-16 X .750 HX G5 ZN
	5	767954	767954	26	FW .406 X .812 X .060 SAE HD ZN
	6	768523	768523	30	FW .343X .687 X .051/.080 HD ZN/YL
	7	023655	023655	6	NT .312-24 HXZY NL
	8	781286	781286	2	PUMP ROD ADJUSTER ASSEMBLY
	9	600221	600221	2	CENTERING DAMPER
	10	781922	781922	4	DAMPER BALL STUD
	11	029876	029876	2	LW .312 INT-EXT TOOTH Z
	12	367557	367557	2	PUMP ARM
	13	704163	704163	2	CS .250-20 X 2.00 HX G5 ZN
	14	768515	768515	4	FW .281 X .625 X .051/.080 HD ZN/YL
	15	068551	068551	2	NT .250-20 HX NL ZN
	16	782979	782979	2	CS .375-16 X 4.75 HX G5 ZN
	17	063198	063198	4	CS 10-24 X .750 HXFLK ZN
	18	781211	781211	2	PUSH BUTTON SWITCH
	19	348797	348797	2	ADJUSTABLE PIVOT
	20	036244	036244	6	CS .375-16 X 1.000 HX G5 ZN
	21	059832	059832	4	NT #10-24 HX NL ZN
	22	034272	034272	8	NT .312-18 HX G5 ZN
	23	054502	054502	4	NT .375-16 HX GRD 5 ZN
<b>7</b>	24	101766	101766	2	BRAKE ARM EXTENSION
<b>6</b>		350272	350272	2	BRAKE ARM EXTENSION
	25	005116	005116	4	CS .375-16 X 1.375 HX G5 ZN
	26	350397	350397	2	BRAKE LINK TURNBUCKLE
	27	350330	350330	1	L.S. BRAKE PIVOT ARM
	28	350264	350264	1	R.S. BRAKE PIVOT ARM (NOT SHOWN)
	29	765339	765339	4	BUSHING
	30	086660	086660	2	NT .375-16 HX LK NY
<b>7</b>	31	600925	600925	1	BRAKE ASSY LEFT WHEEL
<b>7</b>		600924	600924	1	BRAKE ASSY RIGHT WHEEL (NOT SHOWN)
<b>6</b>		781112	781112	1	BRAKE ASSY LEFT WHEEL (S/N PRIOR TO 07120009)
<b>6</b>		781351	781351	1	BRAKE ASSY RIGHT WHEEL (S/N PRIOR TO 07120009)
<b>7</b>	32	600923	600923	2	WHEEL HUB
<b>6</b>		781765	781765	2	BRAKE DRUM-HUB ASSEMBLY
	33	036236	036236	4	CS .312-18 X 1.000 HX G5 ZN
	34	064014	064014	8	CS .312-18X .875 HX G5
<b>7</b>	35	601289	N/A	2	HG MOTOR NUT
<b>6</b>		065516	N/A	2	ROSS CASTLE NUT
<b>7</b>	36	601290	N/A	2	HG MOTOR KEY
<b>6</b>		064337	N/A	2	ROSS KEY

### NOTES:

1. For units with serial number 07120009 and higher: Torque to 244-285 N-m. Included with wheel motor.

- 
2. For units with serial number 07120009 and higher: Torque to 23.0 N-m.
  3. For units with serial number 07120009 and higher: 600925 used on left wheel. 600924 used on right wheel.
  4. For units with serial numbers prior to 07120009: Torque to 475-508 N-m. Included with wheel motor.
  5. For units with serial numbers prior to 07120009: Torque brake assembly mounting bolts to 135.6 N-m.
  6. Used on mowers with serial numbers prior to 07120009.
  7. Used on mowers with serial numbers 07120009 and higher.

# Steering Sub-Assembly

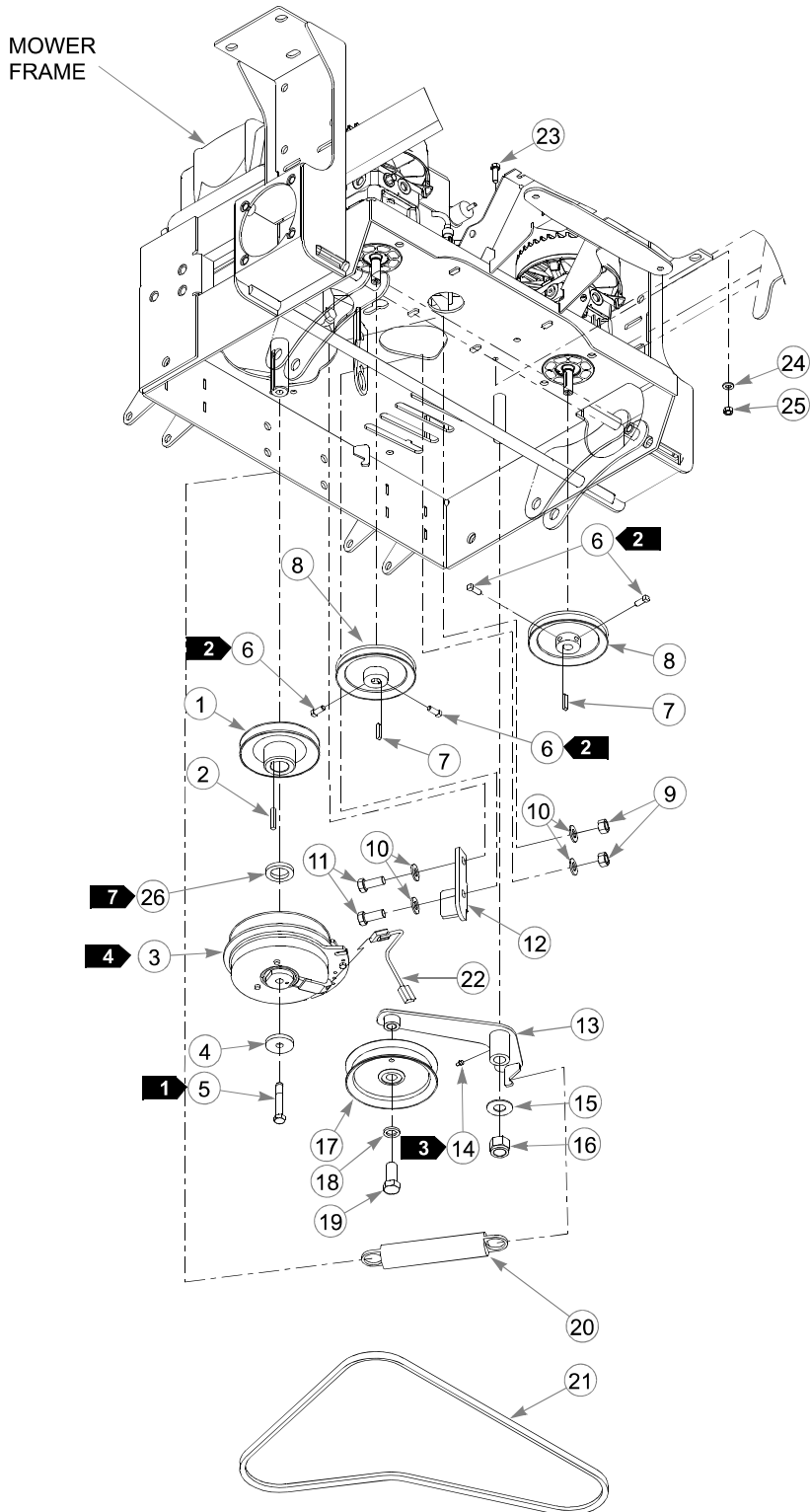


ITEM NO.	SERVICE PART NO.	MFG. PART NO.	QTY.	DESCRIPTION
1	781260	N/A	2	STEERING BAR GRIP
2	348755	348755	2	STEERING BAR
3	767954	767954	16	FW .406 X .812 X .060 SAE HD ZN
4	036244	036244	4	CS .375-16 X 1.000 HX G5 ZN
5	705178	705178	6	CS .375-16 X 1.750 HX G5 ZN
6	023655	023655	2	NT .312-24 HXZY NL
7	768523	768523	4	FW .343X .687 X .051/.080 HD ZN/YL
8	348946	348946	2	STEERING ARM MOUNT
9	348888	348888	1	STEERLEVER SUPPORT LH (SHOWN)
	348714	348714	1	STEERLEVER SUPPORT RH
10	781153	781153	4	BUSHING
11	781716	781716	2	SS .500-13 X 1.75 SH ZN
12	781583	781583	2	BRAKE ROD ASSEMBLY
13	086660	086660	6	NT .375-16 HX LK NY
14	348862	348862	4	STEERLEVER BUSHING

## NOTES:

1. Includes Item 1 (781260 Steering Bar Grip).

# Pump Belt and Pulleys Installation



## **Pump Belt and Pulleys Installation**

ITEM NO. ITEM NO.	SERVICE PART NO.	MFG. PART NO.	QTY	DESCRIPTION
1	779876	779876	1	ENGINE SC SINGLE PULLEY
2	212076	212076	1	KEY 1/4 SQ X 1.50 LONG
3	601311	601311	1	WARNER CLUTCH
4	783829	783829	1	FW .460 X 1.750 X .250 ZNYC
5	785659	785659	1	CS .437-20 X 2.50 HX G5 ZNYC
6	083196	083196	4	SS .312-18 X .750 SQ-HD ZN
7	768127	768127	2	KEY 5MM X 30MM RADIUS ENDS
8	768705	768705	2	PULLEY
	325308	325308	2	PULLEY & FAN
9	008193	008193	2	NT .500-13 HX G5 ZNYC
10	767962	767962	4	FW .531 X 1.063 X .090 SAE HD ZN
11	705954	705954	2	CS .500-13 X 1.25 HX G5 ZNYC
12	366765	366765	1	CLUTCH ANCHOR ANGLE
13	349761	349761	1	PUMP IDLER ARM
14	015495	015495	1	STRAIGHT GREASE FITTING
15	025296	025296	1	FW .760 X 1.625 X .08 ZN
16	061101	061101	1	NT .750-10 HX NL ZN
17	781856	781856	1	IDLER PULLEY
18	028118	028118	1	FW .62 X 1.00 X .134 ZN
19	781872	781872	1	CS .625-11X1.25 HX G5 ZN
20	601016	601016	1	IDLER SPRING
21	781443	781443	1	A-SEC PUMP IDLER BELT
22	791251	791251	1	HARNESS, CLUTCH PIGTAIL (DIODE)
23	036236	036236	1	CS .312-18X1.000 HX G5 ZNYC
24	768523	768523	1	FW .343 X .687 X .051/.080 HD ZNYC
25	034272	034272	1	NT .312-18 HX G5 ZNYC
26	797654	797654	1	CLUTCH SPACER MNZ

### **NOTES:**

1. Torque to 61.0-65.1 N-m. If fastener is loosened or removed, do not re-use. Replace with new fastener. Use only hand tools to install this fastener.
2. Torque to 16.3-20.3 N-m.
3. Apply grease at zerk (see owner's manual).
4. For mowers with serial numbers prior to 07060569 order clutch 787366.
5. For mowers with serial numbers prior to 07120009 use 325308 (pulley with fan).
6. Used on mowers with Kawasaki 29 HP engines only.

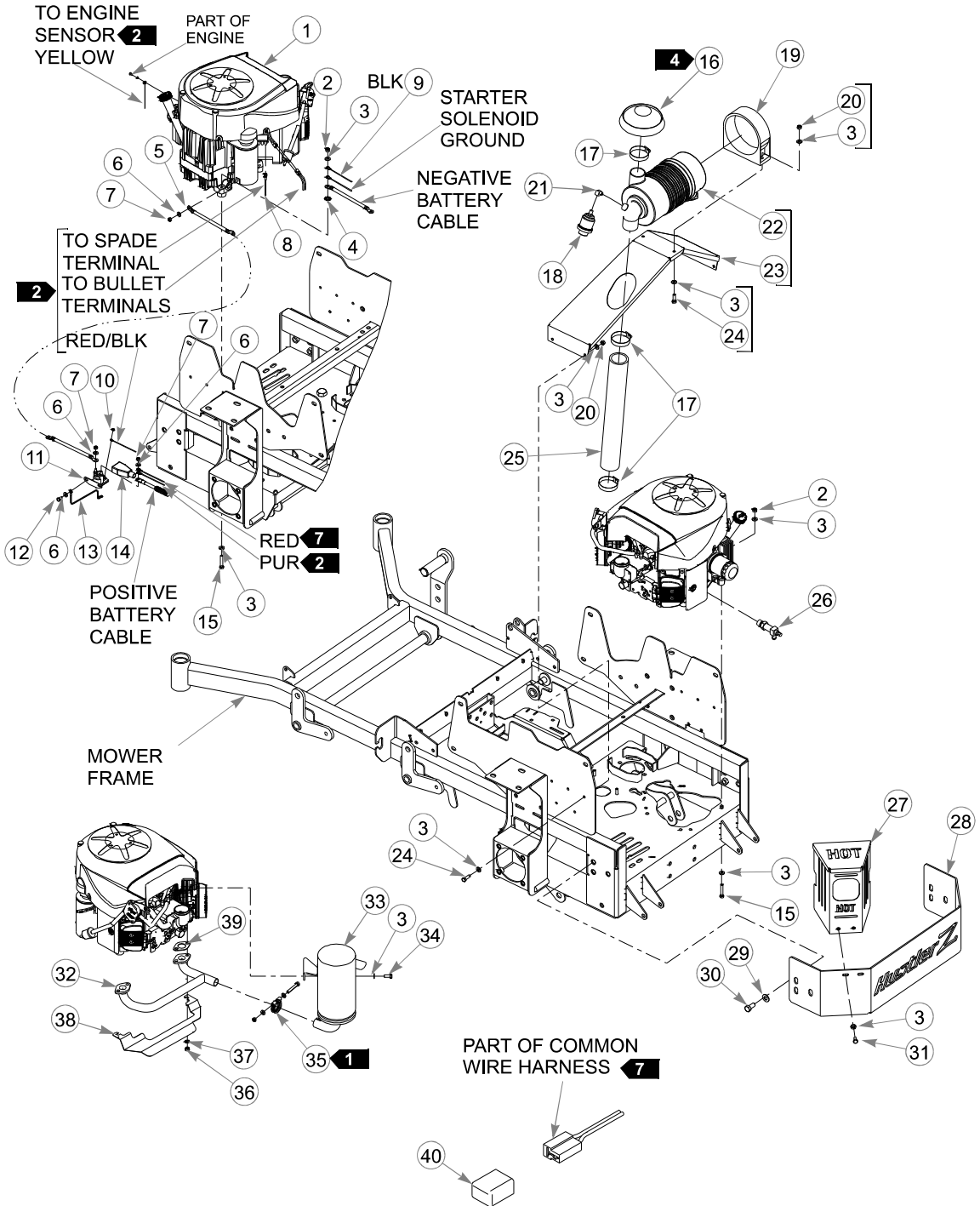
---

---

## Section 5

Kawasaki Engine Installation (Remote Air Cleaner) . . . . .	5-2
Fuel System Installation. . . . .	5-6
Instrument Panel Assembly. . . . .	5-8
Electrical Schematic (799320). . . . .	5-10

# Kawasaki Engine Installation (Remote Air Cleaner)





---

## **Kawasaki Engine Installation (Remote Air Cleaner)**

ITEM NO.	SERVICE PART NO.	MFG. PART NO.	QTY	DESCRIPTION
1	777656	777656	1	KAWASAKI 23 HP ENGINE
2	058776	058776	4	NT .312-18 HXZY NL
3	768523	768523	24	FW .343 X .687 X .051/.080 HD ZN/YL
4	029876	029876	1	LW .312 INT-EXT TOOTH ZN
5	792762	792762	1	BATTERY CABLE
6	768515	768515	5	FW .281 X .625 X .051/.080 HD ZN/YL
7	024927	024927	3	NT .250-20 HX GR.5 ZN
8	799312	799312	1	WIRE HARNESS ADAPTER
9	799320	799320	1	COMMON WIRE HARNESS
10	044255	044255	1	NT #10-32 HX ZN
11	030817	030817	1	STARTER SOLENOID
12	055947	055947	2	CS .250-20 X .500 HX G5 ZN
13	792192	792192	1	STARTER RELAY GROUND WIRE
14	771428	771428	1	RED BATTERY CABLE BOOT
15	050161	050161	4	CS .312-18 X 1.75 HX G5
16	786673	786673	1	DONALDSON AIR CLEANER CAP
17	057661	057661	3	HOSE CLAMP
18	788943	788943	1	AIR FILTER INDICATOR
19	785741	785741	1	MOUNTING BAND
20	034272	034272	6	NT .312-18 HX G5 ZN
21	601216	601216	1	FITTING 90° STREET ELBOW
22	782763	782763	1	AIR CLEANER
23	366443	366443	1	REMOTE AIR CLEAN MOUNT BRACKET
24	036236	036236	6	CS .312-18 X 1.00 HX G5 ZNYC
25	786038	786038	1	REMOTE AIR FILTER HOSE
26	796524	796524	1	OIL DRAIN M20 X 2.5 VALVE
27	350371	350371	1	MUFFLER GUARD
28	349704	349704	1	ENGINE CAGE MOUNT PLATE
29	767962	767962	4	FW .531 X 1.063 X .090 SAE HD ZN
30	016527	016527	4	CS .500-13 X 1.00 HX G5 ZN
31	064006	064006	2	CS .312-18 X .625 HX G5 ZN
32	781732	781732	1	MUFFLER MANIFOLD
33	781724	781724	1	MUFFLER
34	720177	720177	2	CS M 8-1.25 X 20 10.9 HXFL ZN
35	782649	782649	1	KAW (23) EXHAUST PIPE CLAMP
36	782664	782664	4	NT M8-1.25 HX STAINLESS STEEL
37	017004	017004	4	LW .312 MED SPRING ZN
38	360693	360693	1	HEAT SHIELD
39	780841	780841	2	KAW (23) MUFFLER GASKET
40	789131	789131	1	HUSTLER Z FAN CONNECTOR CAP

---

### NOTES:

1. Includes mounting hardware.
2. Part of Item 8 (799312 Wire Harness Adapter).

- 
3. Engine oil capacity: Refer to engine owner's manual.

ENGINE SPEEDS	
MODEL NO.	HIGH IDLE
927731CE	2650±50 rpm
927723CE	2750±50 rpm
928432CE	2950±50 rpm

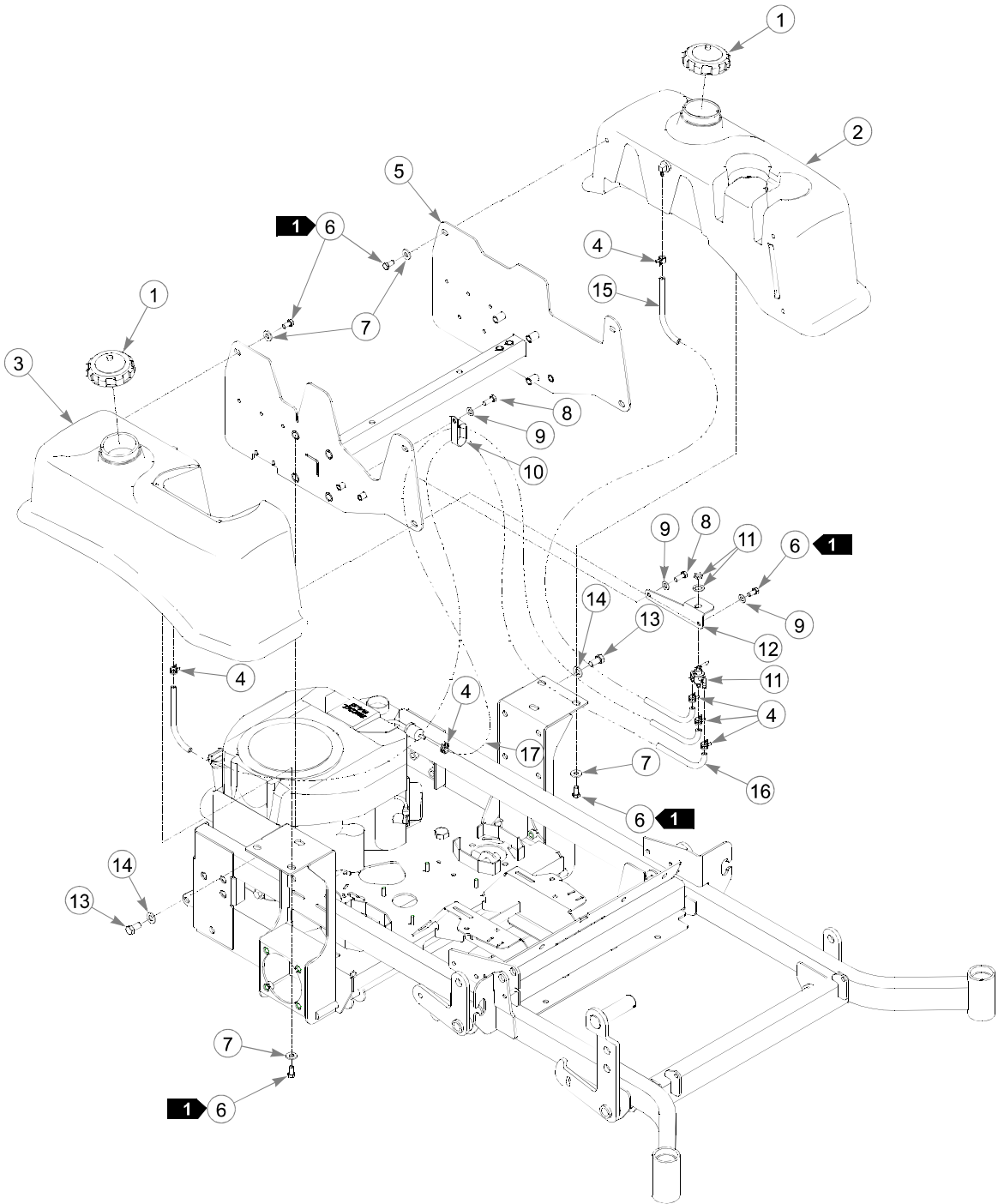
4. Includes one (1) of Item 17 (057661 Hose Clamp).
5. When installing lower hose clamp on air cleaner hose, install as low as possible (against carburetor inlet).
6. This connector used for optional electrical equipment.
7. Part of Item 9 (799320 Common Wire Harness).

---

**This page intentionally left blank.**

8. If fastener is loosened or removed, do not re-use. Replace with new fastener. Use only hand tools to install this fastener.

# **Fuel System Installation**



---

## **Fuel System Installation**

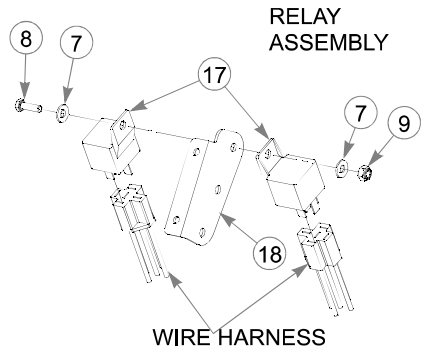
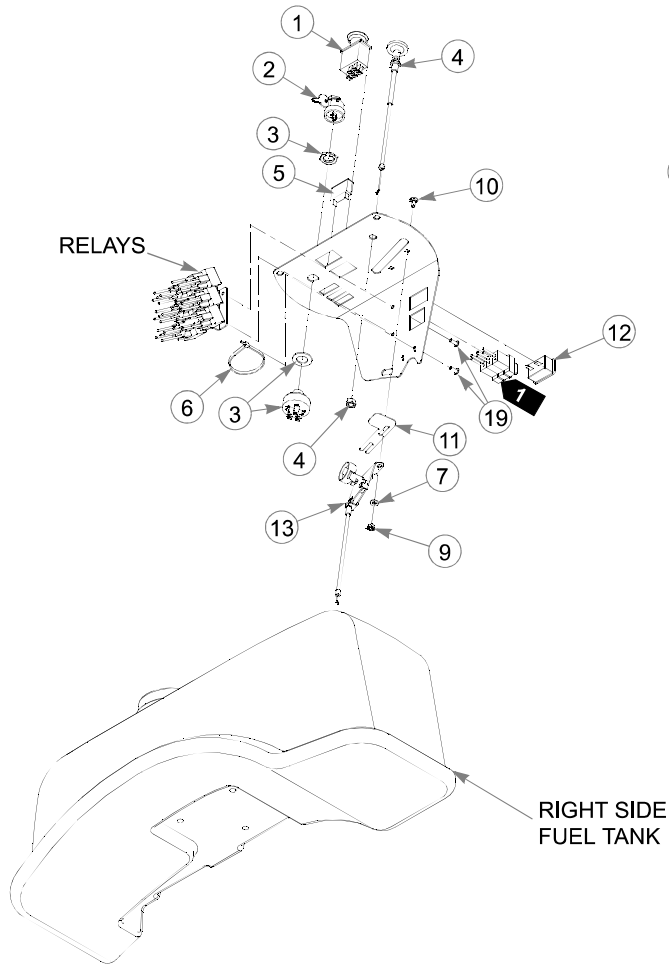
<b>ITEM NO.</b>	<b>SERVICE PART NO.</b>	<b>MFG. PART NO.</b>	<b>QTY</b>	<b>DESCRIPTION</b>
1	779306	779306	2	3.5" FUEL CAP
2	793240	793240	1	LEFT SIDE FUEL TANK
3	793232	793232	1	RIGHT SIDE FUEL TANK
4	000323	000323	6	CLIP
5	106732	N/A	1	REAR SEAT SUPPORT
6	055822	055822	12	CS .375-16 X .750 HX G5 ZN
7	712919	712919	11	FW .406 X 1.00 X .12 HRD ZN
8	036244	036244	2	CS .375-16 X 1.000 HX G5 ZN
9	767954	767954	3	FW .406 X .812 X .060 SAE HD ZN
10	797035	797035	1	HOSE CLAMP 1.75"
11	797084	797084	1	3-WAY NYLON FUEL VALVE
12	347989	347989	1	FUEL SHUT-OFF BRACKET
13	705954	705954	8	CS .500-13 X1.25 HX G5 ZN
14	767962	767962	8	FW .531 X 1.063 X .090 SAE HD ZN
15	015818	015818	1	FUEL LINE 1156 MM
16	015818	015818	1	FUEL LINE 673.1 MM
17	015818	015818	1	FUEL LINE 571.5 MMKAWASAKI
	015818	015818	1	FUEL LINE 914.4 MMHONDA
	015818	015818	1	FUEL LINE 965.2 MMKOHLER
18	000331	000331	3	BLACK CABLE TIE (NOT SHOWN)

---

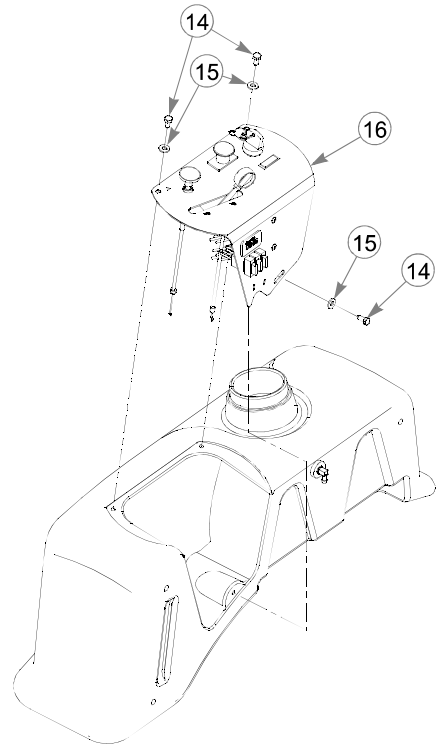
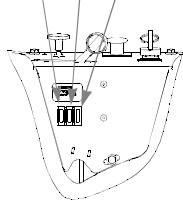
### **NOTES:**

1. Torque to 27.1 N-m.

# Instrument Panel Assembly



FUSE SIZE  
AND LOCATION  
10a 15a 15a



---

## **Instrument Panel Assembly**

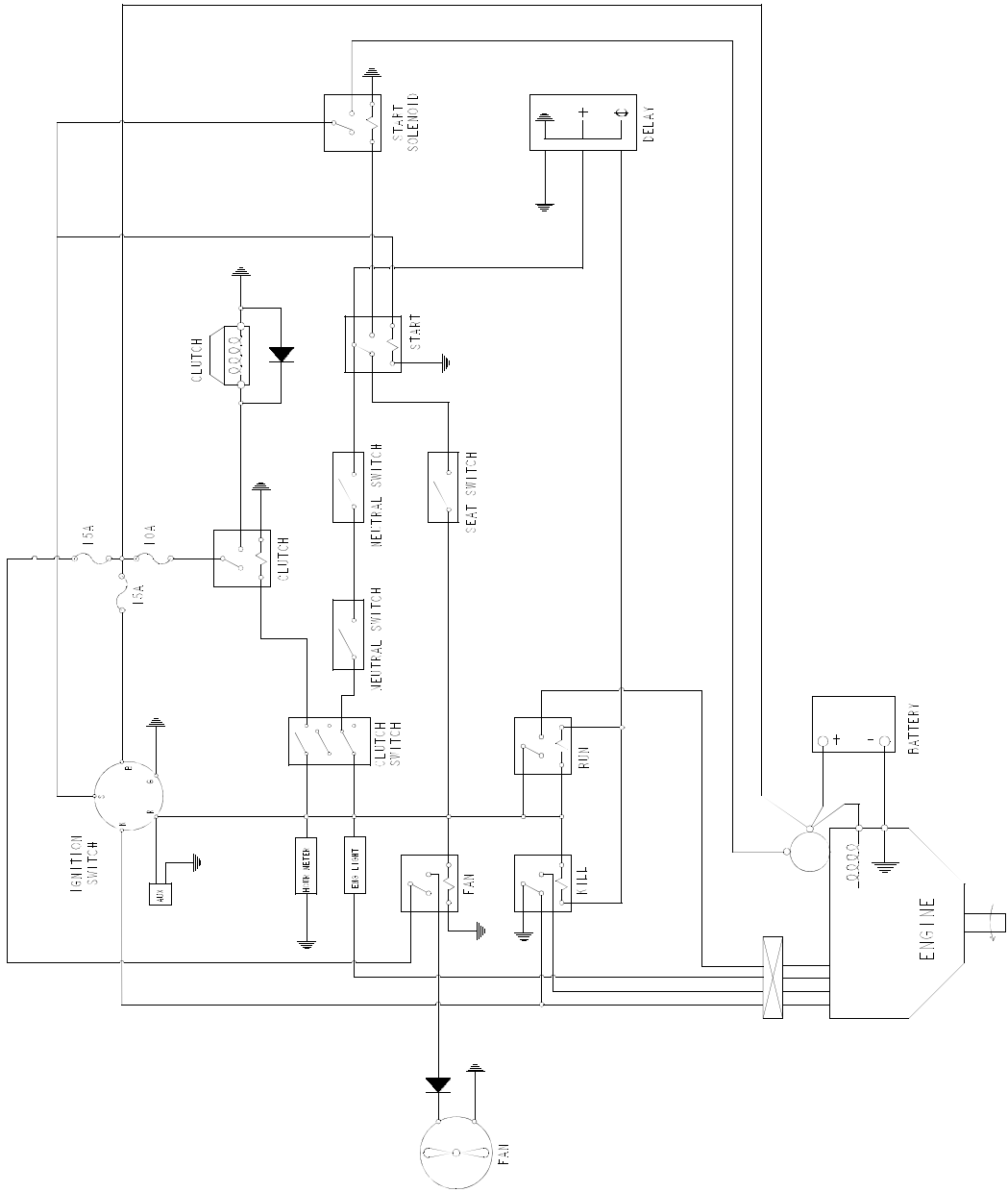
<b>ITEM NO.</b>	<b>SERVICE PART NO.</b>	<b>MFG. PART NO.</b>	<b>QTY</b>	<b>DESCRIPTION</b>
1	776476	776476	1	PTO SWITCH
2	785808	785808	1	KEY SET
3	045898	045898	1	KEY SWITCH
4	785030	785030	1	Z CHOKE CABLE (KAWASAKI)
5	712257	712257	1	RED INDICATOR LIGHT
6	000430	000430	3	TIE STRAP
7	704932	704932	8	FW .219 X .500 X .048 ZN
8	714998	714998	3	MS #10-24 X .625 HX ZN
9	059832	059832	5	NT #10-24 HX NL ZN
10	601098	601098	2	CB 10-24 X .500 ZYNC
11	102707	102707	1	CE THROTTLE STOP
12	769166	769166	1	HOUR METER
13	778365	778365	1	THROTTLE/CHOKE CABLE
14	055947	055947	3	CS .250-20 X .500 HX G5 ZN
15	768515	768515	3	FW .281 X .625 X .051 / .080 HD ZN/YL
16	106633	106633	1	INSTRUMENT PANEL
17	601053	N/A	6	RELAY
18	107920	107920	1	RELAY BRACKET
19	601089	601089	2	RIVET .188 DIA BLK HD
	762195	N/A	1	DELAY MODULE

---

### **NOTES:**

1. Part of 799320 (Mower Wire Harness)

# Electrical Schematic (799320)



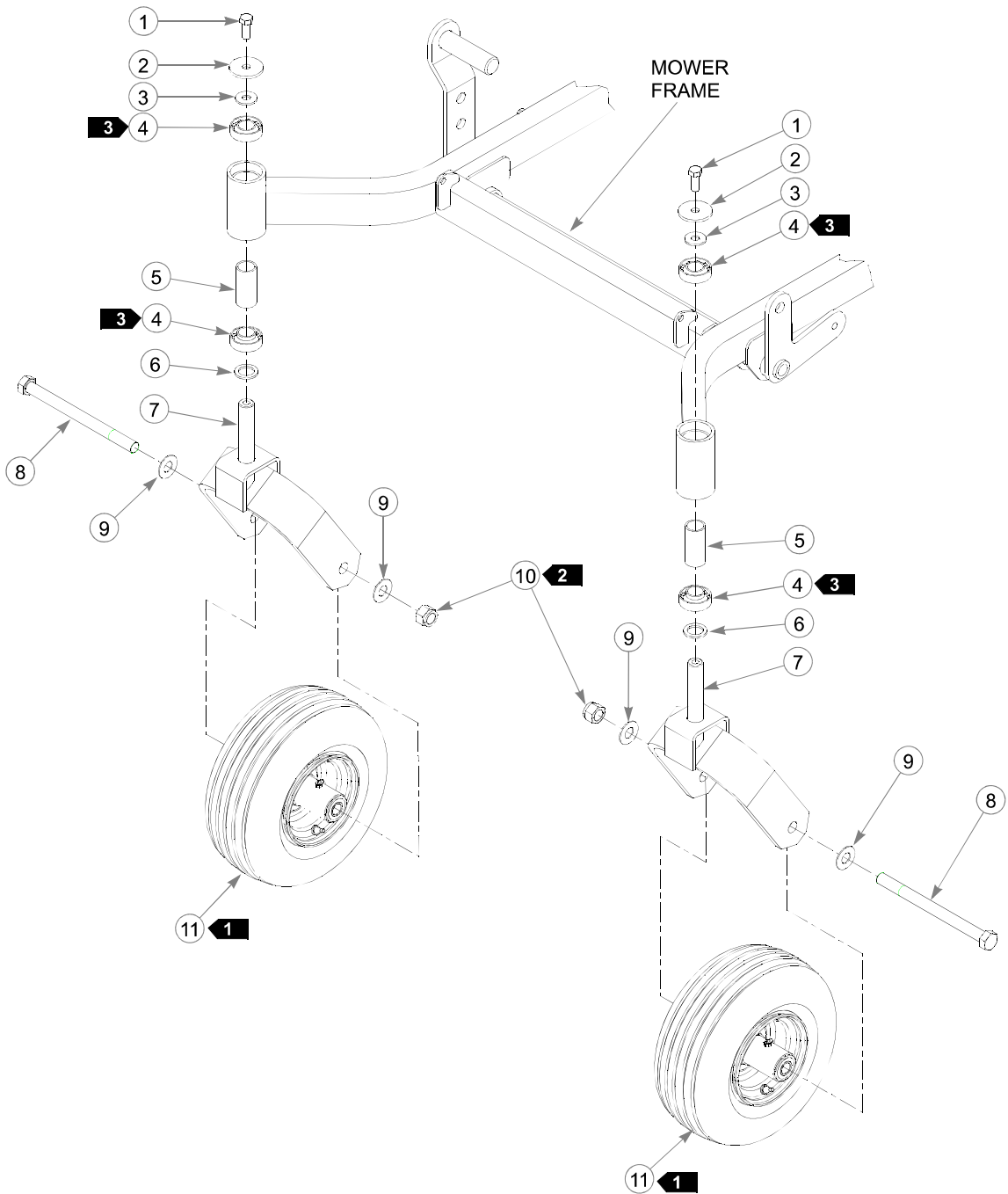


---

## Section 6

Front Wheel Assembly . . . . .	6-2
Front Wheel Breakdown—747782. . . . .	6-4
Optional Semi-Pneumatic Tire/Wheel—789537 . . . . .	6-5
Drive Wheel Assembly Installation . . . . .	6-6
Anti-Rollover Wheel Assembly . . . . .	6-7

# **Front Wheel Assembly**



---

## **Front Wheel Assembly**

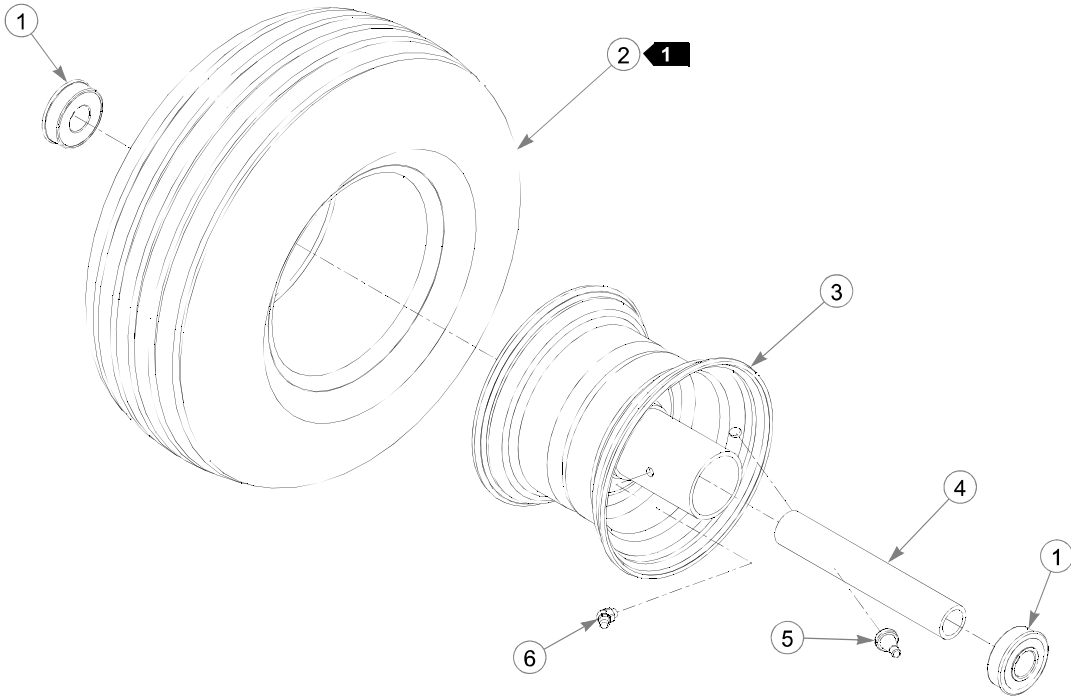
ITEM NO.	SERVICE PART NO.	MFG. PART NO.	QTY	DESCRIPTION
1	705954	705954	2	CS .500-13 X 1.25 HX G5 ZN
2	344267	344267	2	FW .510 X 2.15 X .187 SPL ZN
3	712976	712976	2	FW .531X 1.375X.125 ZNY
4	784223	784223	4	BEARING W/O COLLAR
5	387035	387035	2	SPACER, 1.07 X 1.312 X 2.793
6	045765	045765	2	FW 1.030 X 1.500 X.134 ZN
7	349266	349266	2	FORK
8	041475	041475	2	CS .750-10 X 9.50 HX ZN
9	025296	025296	4	FW .760 X 1.625 X .08 ZN
10	061101	061101	2	NT .750-10 HX NL ZN
11	747782	747782	2	WHEEL & TIRE ASSY
	789537	N/A	2	OPTIONAL SEMI-PNEUMATIC WHEEL/TIRE ASSEMBLY

---

### **NOTES:**

1. Apply grease to zerks.
2. Tighten until all clearances are taken up. Spin the wheel to ensure that it still spins freely. If the wheel does not spin, loosen the nut until the wheel spins freely.
3. Assemble with extended inner race toward item 5 (387035 Spacer, 1.07 x 1.312 x 2.793).

## **Front Wheel Breakdown—747782**



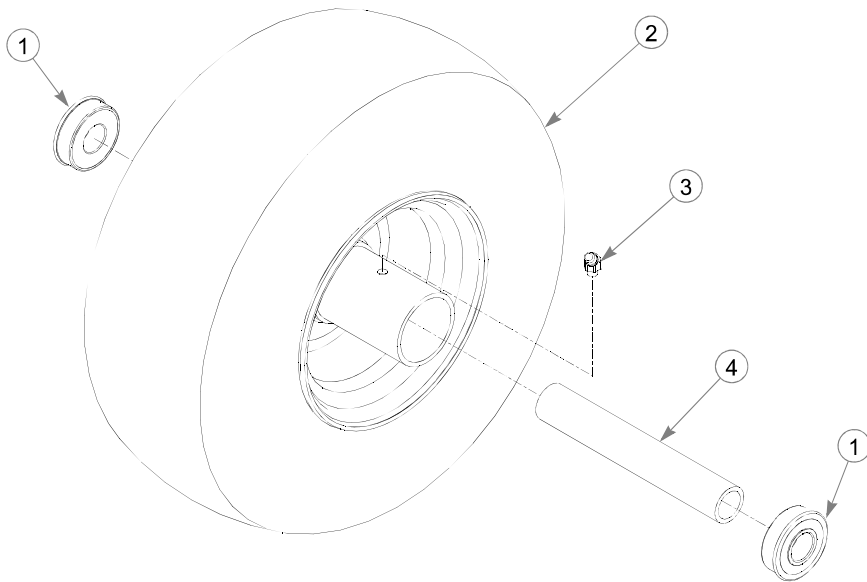
ITEM NO.	SERVICE PART NO.	MFG. PART NO.	QTY	DESCRIPTION
1	039677	N/A	2	WHEEL BEARING
2	747741	N/A	1	13 X 6.50 TIRE
3	747832	N/A	1	6 X 4.5 WHEEL
4	782771	N/A	1	BEARING SPACER
5	019521	N/A	1	TIRE VALVE
6	015511	N/A	1	GREASE FITTING 45 DEG 1/4

### **NOTES:**

1. Inflate tire to 55.16-68.95 kPa.

---

## **Optional Semi-Pneumatic Tire/Wheel—789537**



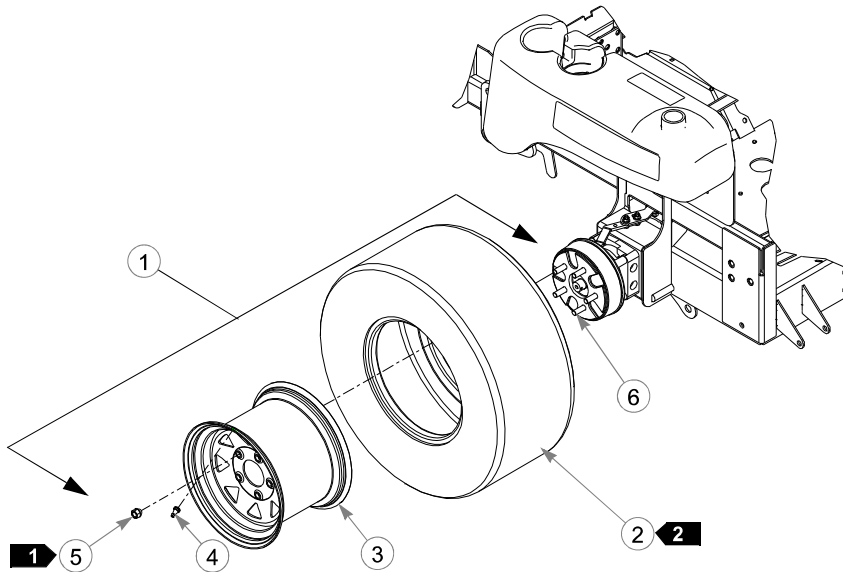
---

ITEM NO.	SERVICE PART NO.	MFG. PART NO.	QTY	DESCRIPTION
1	039677	N/A	2	WHEEL BEARING
2	789537	N/A	1	TIRE/WHEEL ASSEMBLY
3	015511	N/A	1	GREASE FITTING 45 DEG 1/4
4	782771	N/A	1	BEARING SPACER

---

### **NOTES:**

## Drive Wheel Assembly Installation

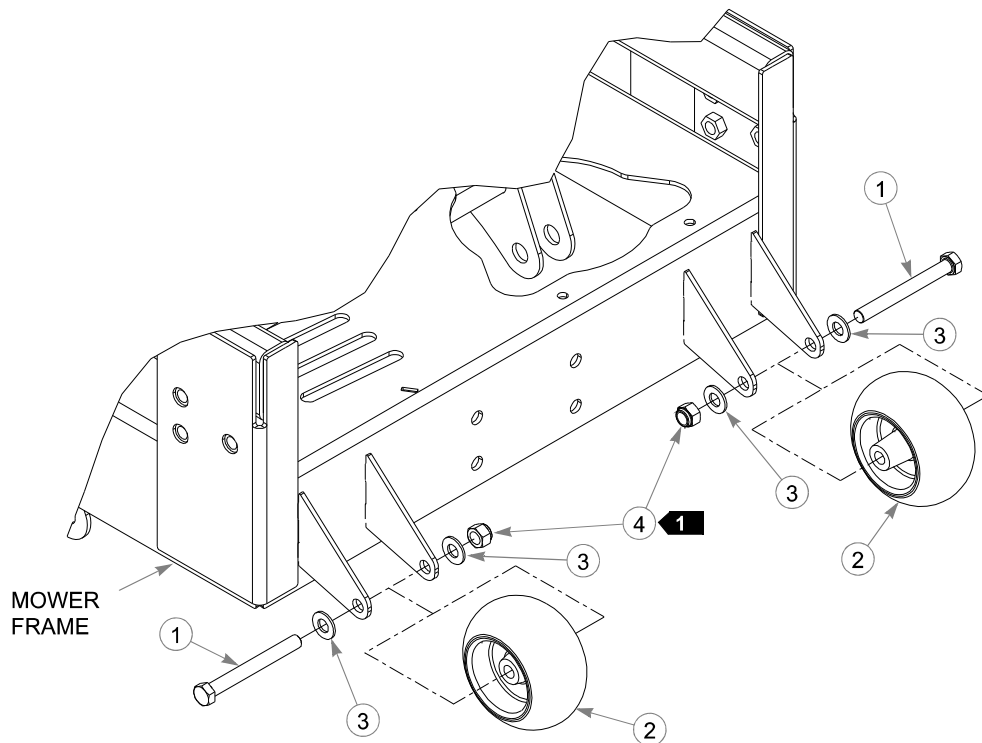


ITEM NO.	SERVICE PART NO.	PART NO.	QTY	DESCRIPTION
<b>3</b> 1	601238	601238	2	WHEEL & TIRE ASSY FOR 60" & 54" (QTY PER MOWER)
2	781245	N/A		TIRE, 12 X 12 X 24
<b>3</b> 3	796250	N/A		WHEEL ASSEMBLY 12 X 8.50 FOR
4	019521	N/A		TIRE VALVE
5	061077	061077	10	WHEEL NUT (QTY PER MOWER)
6	770859	N/A	10	1/2" WHEEL LUG STUD
1	782078	782078	2	WHEEL & TIRE ASSY FOR 54" RD (QTY PER MOWER)
2	782284	NA		TIRE 23 X 9.50-12
3	782086	N/A		WHEEL ASSEMBLY 12 X 7.00
4	019521	N/A		TIRE VALVE
5	061077	061077	10	WHEEL NUT (QTY PER MOWER)
6	770859	N/A	10	1/2" WHEEL LUG STUD

### NOTES:

1. Torque to 88.13-101.7 N-m.
2. Inflate tire to 55.16-68.95 kPa.
3. For mowers with serial numbers prior to 07120009, use 781237 for the wheel and tire assembly, and 781252 for the wheel assembly.

# Anti-Rollover Wheel Assembly



ITEM NO.	SERVICE PART NO.	MFG. PART NO.	QTY	DESCRIPTION
1	068239	068239	2	CS .500-13 X 4.500 HX G5 ZN
2	031997	031997	2	ANTI-SCALP WHEEL
3	767962	767962	4	FW .531 X 1.063 X .090 SAE HD ZN
4	781567	781567	2	NT .50-13 HX LK NY

## NOTES:

1. Do not torque, wheel must turn freely.

---

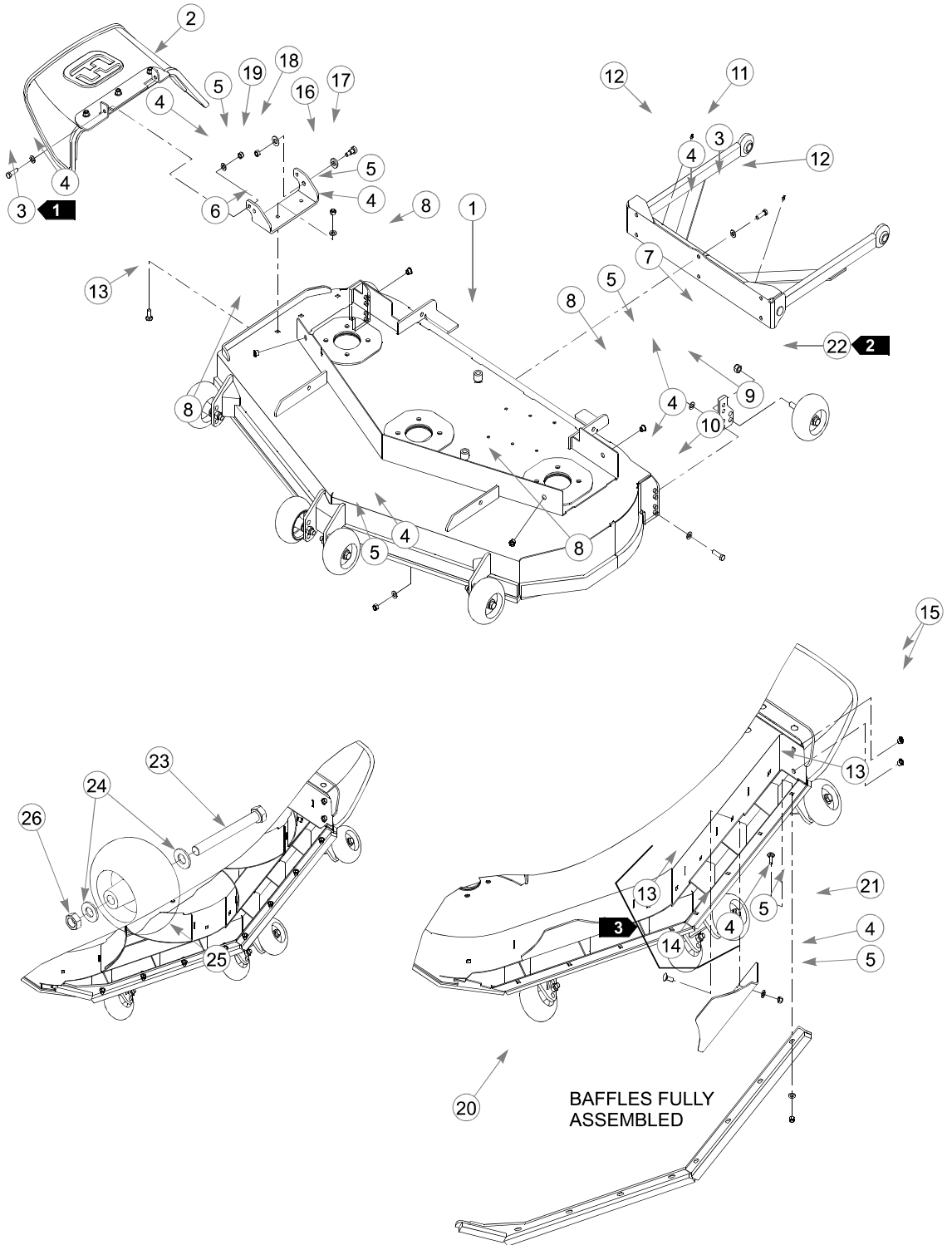


---

## Section 7

54" Side Discharge XR7 Deck Assembly . . . . .	7-2
54" Side Discharge Deck Mulch Baffles . . . . .	7-6
54" Rear Discharge Deck Assy—S/N 08100000 & Higher . . . . .	7-8
54" Rear Discharge Deck Assy—S/N 08010000—08100000 . . . . .	7-10
54" Rear Discharge Deck Assy—S/N Prior to 08010000 . . . . .	7-12
54" Rear Disch. Deck Pulley Assy—S/N 08100000 & Higher . . . . .	7-14
54" Rear Discharge Deck Pulley Assy—S/N Prior to 08100000 . . . . .	7-16
Spindle Assembly—796235 . . . . .	7-18
Spindle Assembly—796680 . . . . .	7-19

# 54" Side Discharge XR7 Deck Assembly



---

## **54" Side Discharge XR7 Deck Assembly**

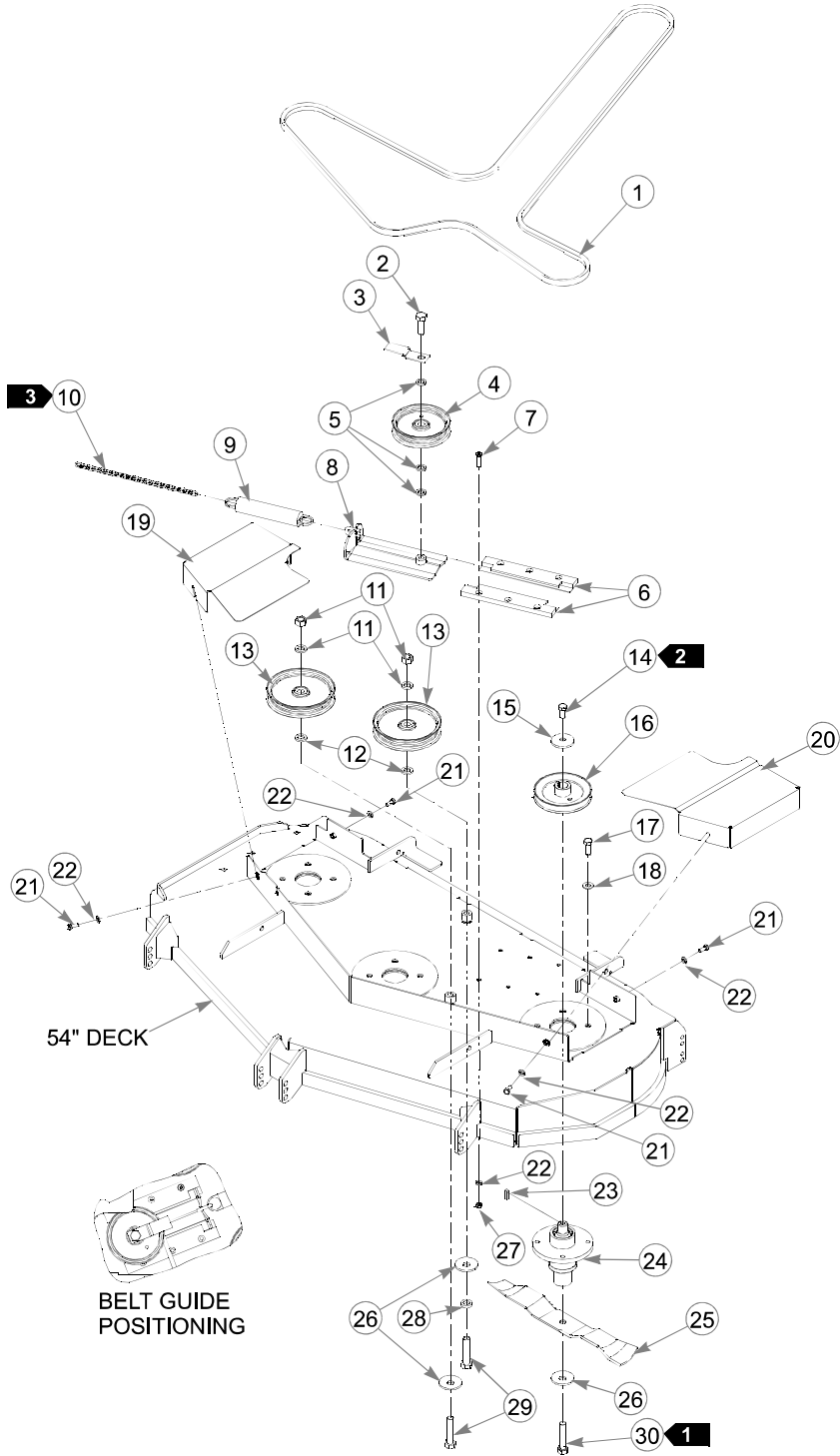
ITEM NO.	SERVICE PART NO.	MFG. PART NO.	QTY.	DESCRIPTION
1	N/A	108607	1	54" DECK W/A
2	798694	798694	1	RUBBER CHUTE ASSEMBLY
3	052860	052860	8	CS .375-16 X 1.25 HX G5
4	767954	767954	38	FW .406 X .812 X .060 SAE HD ZN
5	086660	086660	26	NT .375-16 HX LK NY
6	103010	103010	1	DISCHARGE CHUTE MOUNT BRACKET
7	781567	781567	6	NT .50-13 HX LK NY
8	N/A	808485	4	5/16-18 THREAD RIVET NUT
9	103184	103184	2	REAR ANTI-SCALP BRACKET
10	005116	005116	4	CS .375-16 X 1.375 HX G5 ZNYC
11	314104	314104	1	PUSHER
12	015495	015495	2	STRAIGHT GREASE FITTING
13	025395	025395	14	CB .375-16 X 1.00 STD CD
14	108619	108619	2	54" AIR FLOW FLOOR
15	808493	808493	2	3/8-16 THREAD RIVET NUT
16	070037	070037	1	FW .530X 1.06X.19 HRD Z
17	750414	750414	1	SB .500X .500 SH .375-1
18	767962	767962	1	FW .531X 1.063X.090 SAE
19	086660	086660	1	NT .375-16 HXZY NL
20	108627	108627	1	ADAPTER W/A 54" LS CE
21	107640	107640	1	BLOWOUT 54" RS XR7
22	788166	788166	6	ANTI SCALP WHEEL ASSY
23	781708	N/A	6	CS .500-13 X 4.25 HX G5 ZN
24	767962	N/A	12	FW .531 X 1.063 X .090 SAE HD ZN
25	031997	N/A	6	ANTI-SCALP WHEEL
26	053199	N/A	6	NT .500-13 HX JAM ZN

---

### **NOTES:**

1. Do not torque, Item 2 (798694 Discharge Chute) must pivot freely.
2. Includes items 23, 24, 25, and 26.
3. This items are used when the discharge chute is installed.

# 54" Side Discharge XR7 Deck Pulley Assembly



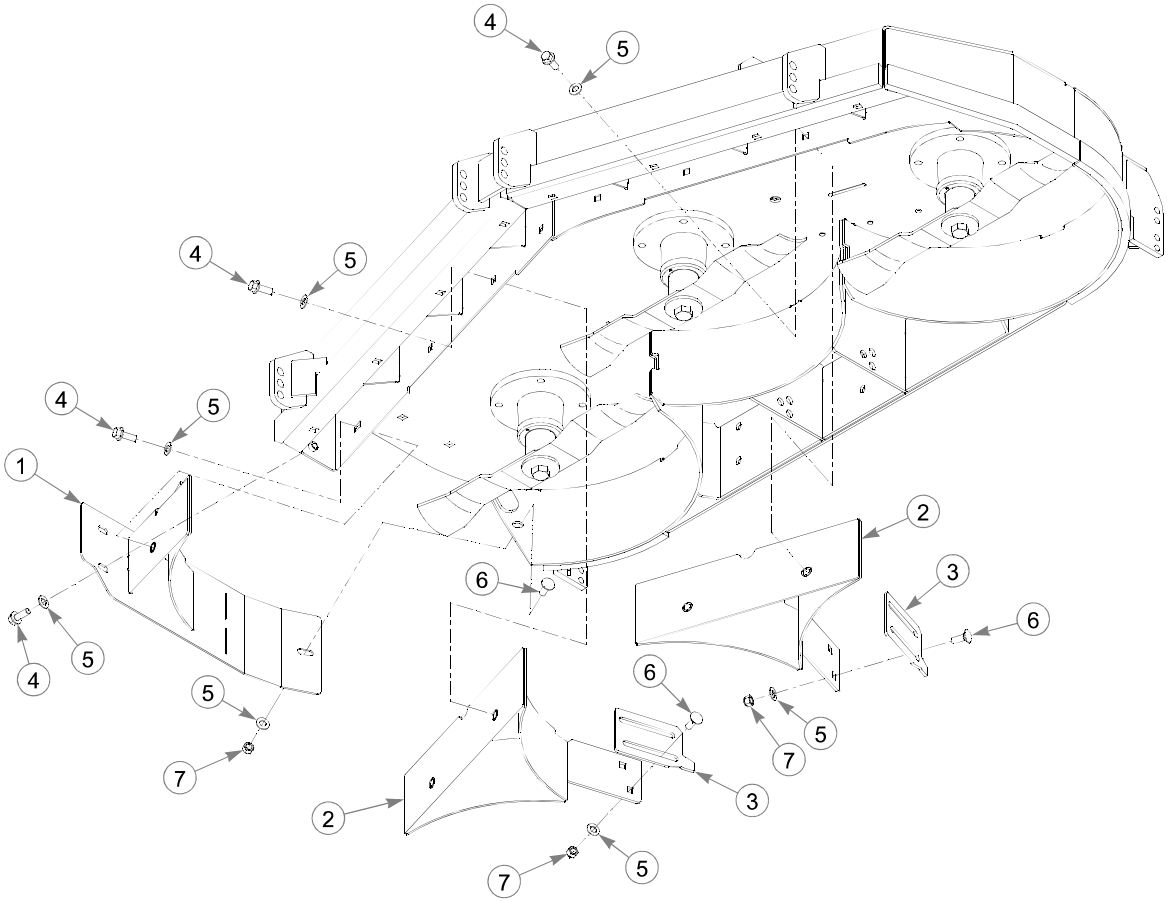
## **54" Side Discharge XR7 Deck Pulley Assembly**

ITEM NO.	SERVICE PART NO.	MFG. PART NO.	QTY.	DESCRIPTION
1	797928	797928	1	B-SECTION BELT
2	025007	025007	1	CS .625-11 X 1.50 HX G5 ZN
3	347443	347443	1	DECK BELT IDLER TOP GUIDE
4	781856	781856	1	5.00" IDLER PULLEY
5	028118	028118	3	FW .62 X 1.00 X .134 ZN
6	601434	601434	2	UHMW IDLER SLIDE
7	797910	797910	6	CS .312-18 X 1.50 FLT SH ZY
8	350884	350884	1	DECK IDLER
9	781302	781302	1	IDLER SPRING
10	373191	059931	1	SIDE MOUNT CHAIN 21 LINKS
11	016972	016972	2	NT .625-11 HX G5 ZNYC
12	797449	797449	4	FW .650 X 1.125 X .18 ZNYC G5
13	781385	781385	2	6.00" IDLER PULLEY
14	016527	016527	3	CS .500-13 X 1.00 HX G5 ZN
15	752386	752386	3	CW .515 X 2.25 X .204 ZN
16	798967	798967	3	DECK DRIVE PULLEY
17	705954	705954	12	CS .500-13 X 1.25 HX G5 ZY
18	767962	767962	12	FW .531 X 1.063 X .090 SAE
19	103986	103986	1	RS 54" PULLEY COVER
20	103994	103994	1	LS 54" PULLEY COVER
21	034280	034280	4	CS .312-18 X .750 HX G5
22	768523	768523	10	FW .343 X .687 X .051/.080 H
23	212472	212472	3	KEY 1/4 SQ X 1.00 LONG
<b>5</b>	24	601630	3	DECK SPINDLE ASSY
<b>4</b>		796235X	3	DECK SPINDLE ASSY
		N/A		
25	797704	797704	3	BLADE, 18.50"-MUL-F-CW
26	782474	782474	5	CW .631 X 2.250 X .187 PNT
27	058776	058776	6	NT .312-18 HXZY NL
28	769257	769257	1	FW .656 X 1.250 X .250 ZNY
29	783738	783738	2	CS .625-11 X 3.00 FULL HX G5 ZN
30	601983	601983	3	CS .625-11 X 2.25" HX G5 ZY

### NOTES:

1. Torque to 160 N-m.
2. Torque to 88-102 N-m.
3. See "54" Side Disch. Deck Belt Routing & Tensioning" on page 8-4 for belt tensioning.
4. Used on mowers with serial numbers prior to 09110001. See "Spindle Assembly-796235" on page 7-18 for breakdown.
5. Used on mowers with serial numbers higher than 09110001.
6. Item 6 (601434) replaces idler slide components 600171, 600189, and 786335 found on mowers with serial numbers prior to 08010000.

# **54" Side Discharge Deck Mulch Baffles**



---

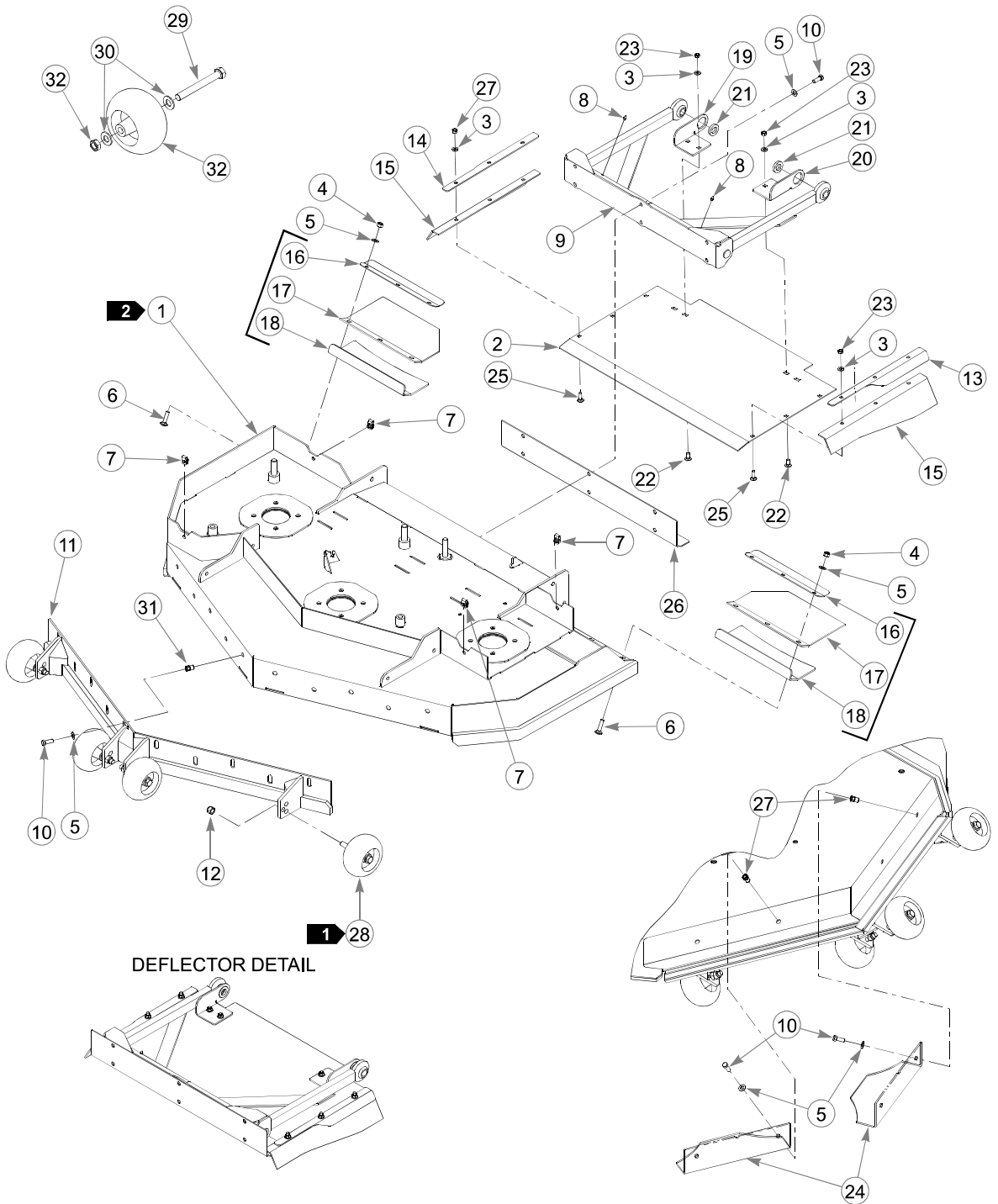
## **54" Side Discharge Deck Mulch Baffles**

<b>ITEM NO.</b>	<b>SERVICE PART NO.</b>	<b>MFG. PART NO.</b>	<b>QTY.</b>	<b>DESCRIPTION</b>
1	108575	108575	1	END MULCH CAP
2	108577	108577	2	CENTER MULCH
3	108320	108320	2	MULCH PLATE
4	029751	029751	8	CS .375-16X1.000 HXFLK
5	767954	767954	13	FW .406X .812 X.060 SAE
6	025395	025395	5	CB .375-16X 1.00 STD CD
7	086660	086660	5	NT .375-16 HXZY NL

---

**NOTES:**

**54" Rear Discharge Deck Assy—S/N 08100000 & Higher**





---

## ***54" Rear Discharge Deck Assy—S/N 08100000 & Higher***

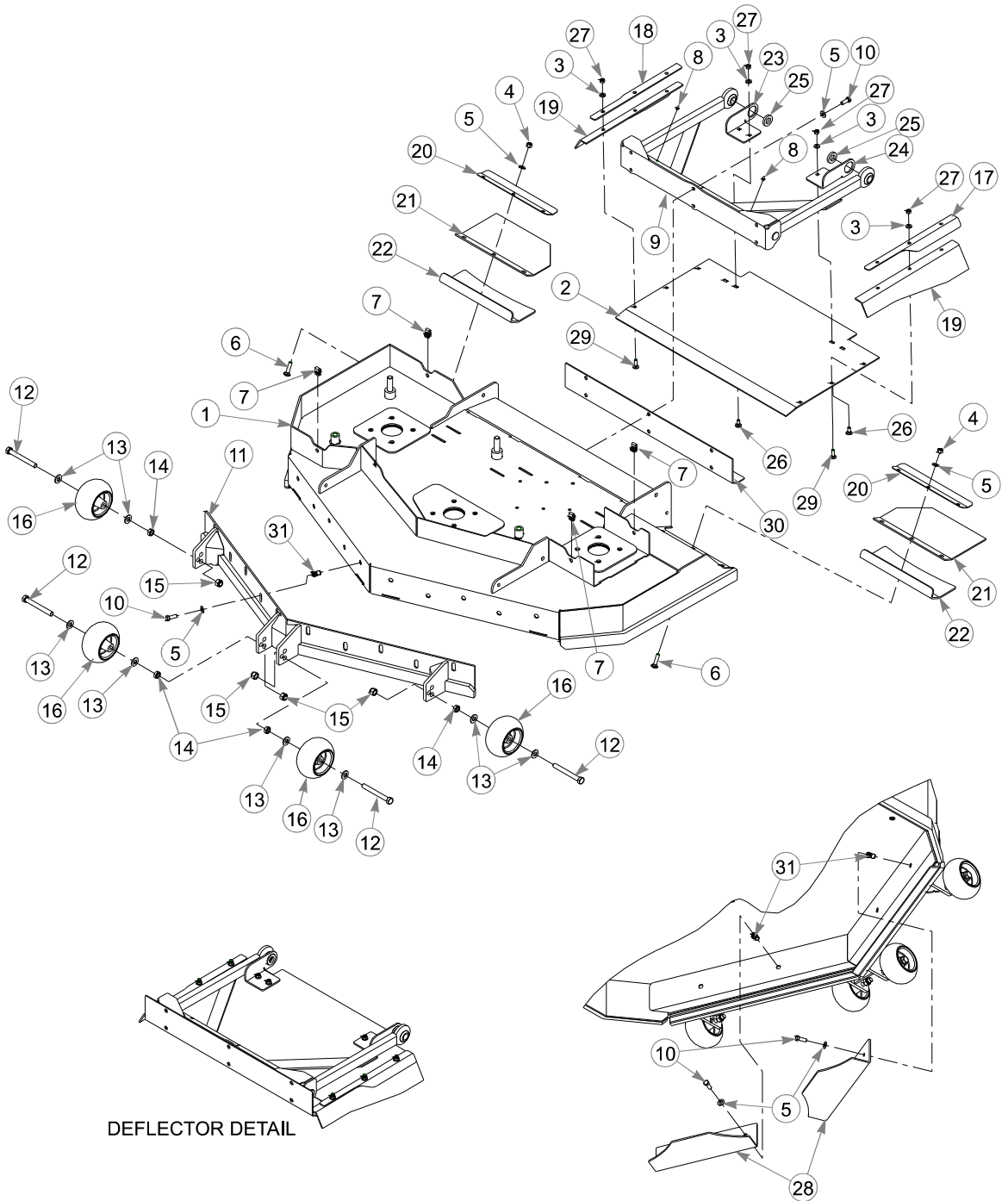
ITEM NO.	SERVICE PART NO.	MFG. PART NO.	QTY.	DESCRIPTION
1	549733	110441	1	54" REAR DISCHARGE DECK W/A
2	109490	109490	1	DISCHARGE SHIELD
3	768523	768523	10	FW .343 X .687 X .051/.080 HD ZN
4	086660	086660	6	NT .375-16 HX LK NY
5	767954	767954	26	FW .406 X .812 X .060 SAE HD ZN
6	710194	710194	6	CB .375-16X 1.50 STD G5
7	601069	601069	4	CN .312-18X.200 MAX THK
8	015495	015495	2	STRAIGHT GREASE FITTING
9	349803	349803	1	PUSHER
10	036244	036244	20	CS .375-16 X 1.00 HX G5 ZN
11	107975	107975	1	54" REAR DISCHARGE FRONT ANGLE
12	781567	781567	4	NT .50-13 HXZY NL
13	109486	109486	1	CLAMP ANGLE LS
14	109487	109487	1	CLAMP ANGLE RS
15	601483	601483	2	RD SIDE FLAP
16	107972	107972	2	ANGLE RD DISCHARGE FLAP
17	601017	601017	2	RD REAR FLAP
18	107973	107973	2	ANGLE DECK STIFFENER
19	109482	109482	1	CHUTE BRACKET RS
20	109483	109483	1	CHUTE BRACKET LS
21	778399	778399	2	FW .781 X 1.375 X .250 ZNYC
22	016253	016253	4	CB .312-18 X .750 FUL ZN
23	058776	058776	10	NT .312-18 HXZY NL
24	107978	107978	2	AIR FLOW BAFFLE
25	037887	037887	6	CB .312-18X 1.000 FUL Z
26	109491	109491	1	SHIELD MTG ANGLE
27	600994	600994	14	RIVET NUT, 3/8-16 THREAD
28	788166	788166	4	ANTI SCALP WHEEL ASSEMBLY
29	781708	N/A	4	CS .500-13 X 4.25 HX G5 ZN
30	767962	N/A	8	FW .531 X 1.063 X.090 SAE HD ZN
31	053199	N/A	4	NT .500-13 HX JAM ZN
32	031997	N/A	4	ANTI-SCALP WHEEL

---

**NOTES:**

7. Includes Items 29 through 32. Service part deck includes decals, see "54" Rear Discharge Deck Decals" on page 9-6.

**54" Rear Discharge Deck Assy—S/N 08010000—08100000**



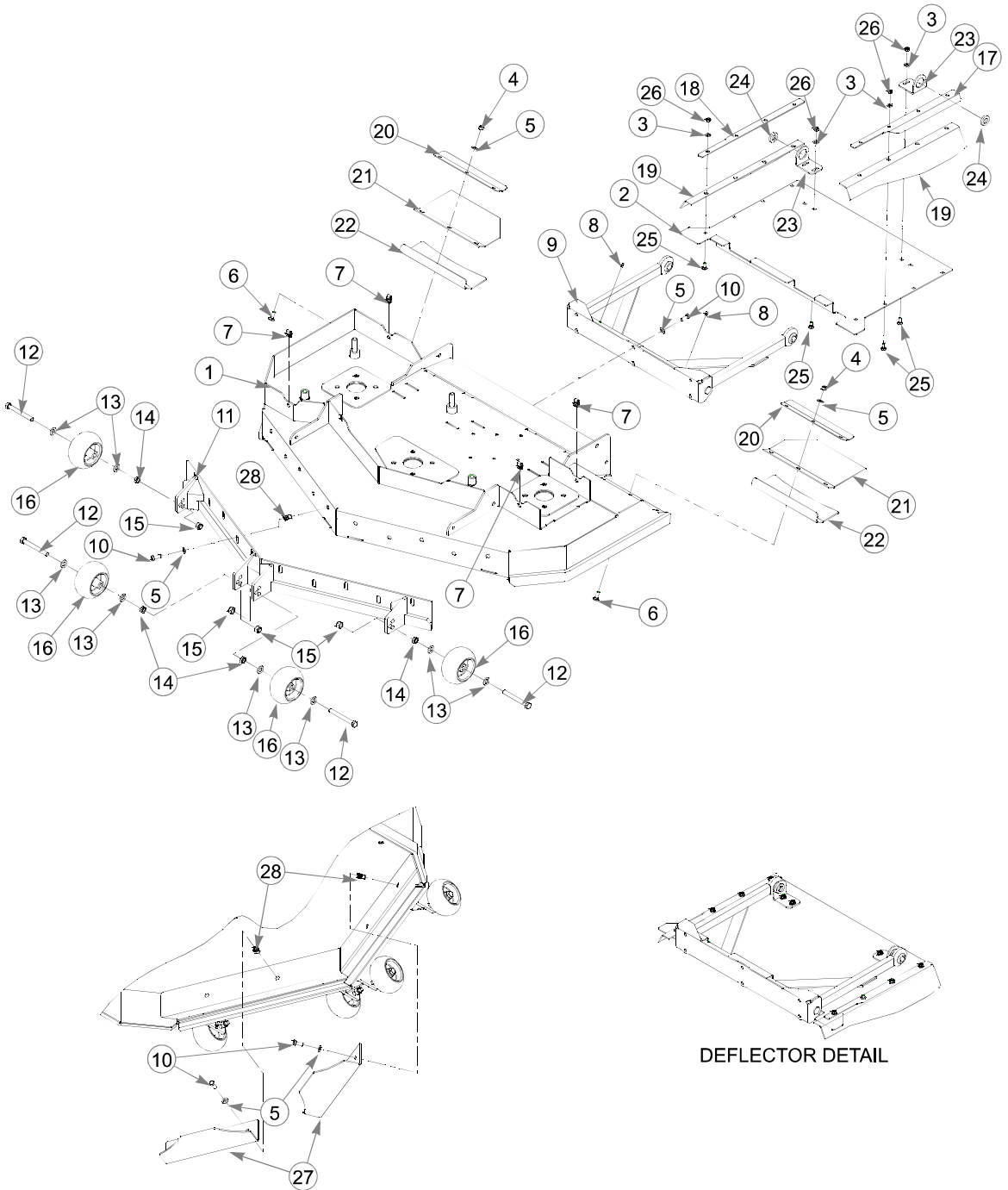
## 54" Rear Discharge Deck Assy—S/N 08010000—08100000

ITEM NO.	SERVICE PART NO.	MFG. PART NO.	QTY.	DESCRIPTION	
2	1	548644CE	107933	1	54" REAR DISCHARGE DECK W/A
	2	109490	109490	1	DISCHARGE SHIELD
	3	768523	768523	10	FW .343 X .687 X .051/.080 HD ZN
	4	086660	086660	6	NT .375-16 HX LK NY
	5	767954	767954	26	FW .406 X .812 X .060 SAE HD ZN
	6	710194	710194	6	CB .375-16X 1.50 STD G5
	7	601069	601069	4	CN .312-18X.200 MAX THK
	8	015495	015495	2	STRAIGHT GREASE FITTING
	9	349803	349803	1	PUSHER
	10	036244	036244	20	CS .375-16 X 1.00 HX G5 ZN
	11	107975	107975	1	54" REAR DISCHARGE FRONT ANGLE
	12	781708	N/A	4	CS .500-13 X 4.25 HX G5 ZN
	13	767962	N/A	8	FW .531 X 1.063 X.090 SAE HD ZN
	14	053199	N/A	4	NT .500-13 HX JAM ZN
	15	781567	781567	4	NT .50-13 HXZY NL
	16	031997	N/A	4	ANTI-SCALP WHEEL
	17	109486	109486	1	CLAMP ANGLE LS
	18	109487	109487	1	CLAMP ANGLE RS
	19	601483	601483	2	RD SIDE FLAP
	20	107972	107972	2	ANGLE RD DISCHARGE FLAP
	21	601017	601017	2	RD REAR FLAP
	22	107973	107973	2	ANGLE DECK STIFFENER
	23	109482	109482	1	CHUTE BRACKET RS
	24	109483	109483	1	CHUTE BRACKET LS
	25	778399	778399	2	FW .781 X 1.375 X .250 ZNYC
	26	016253	016253	4	CB .312-18 X .750 FUL ZN
	27	058776	058776	10	NT .312-18 HXZY NL
	28	107978	107978	2	AIR FLOW BAFFLE
	29	037887	037887	6	CB .312-18X 1.000 FUL Z
	30	109491	109491	1	SHIELD MTG ANGLE
	31	600994	600994	14	RIVET NUT, 3/8-16 THREAD
1		788166	788166	4	ANTI SCALP WHEEL ASSEMBLY

### NOTES:

1. Includes Items 12 through 14 and 16.
2. Service part deck includes decals, see "54" Rear Discharge Deck Decals" on page 9-6.

# **54" Rear Discharge Deck Assy—S/N Prior to 08010000**



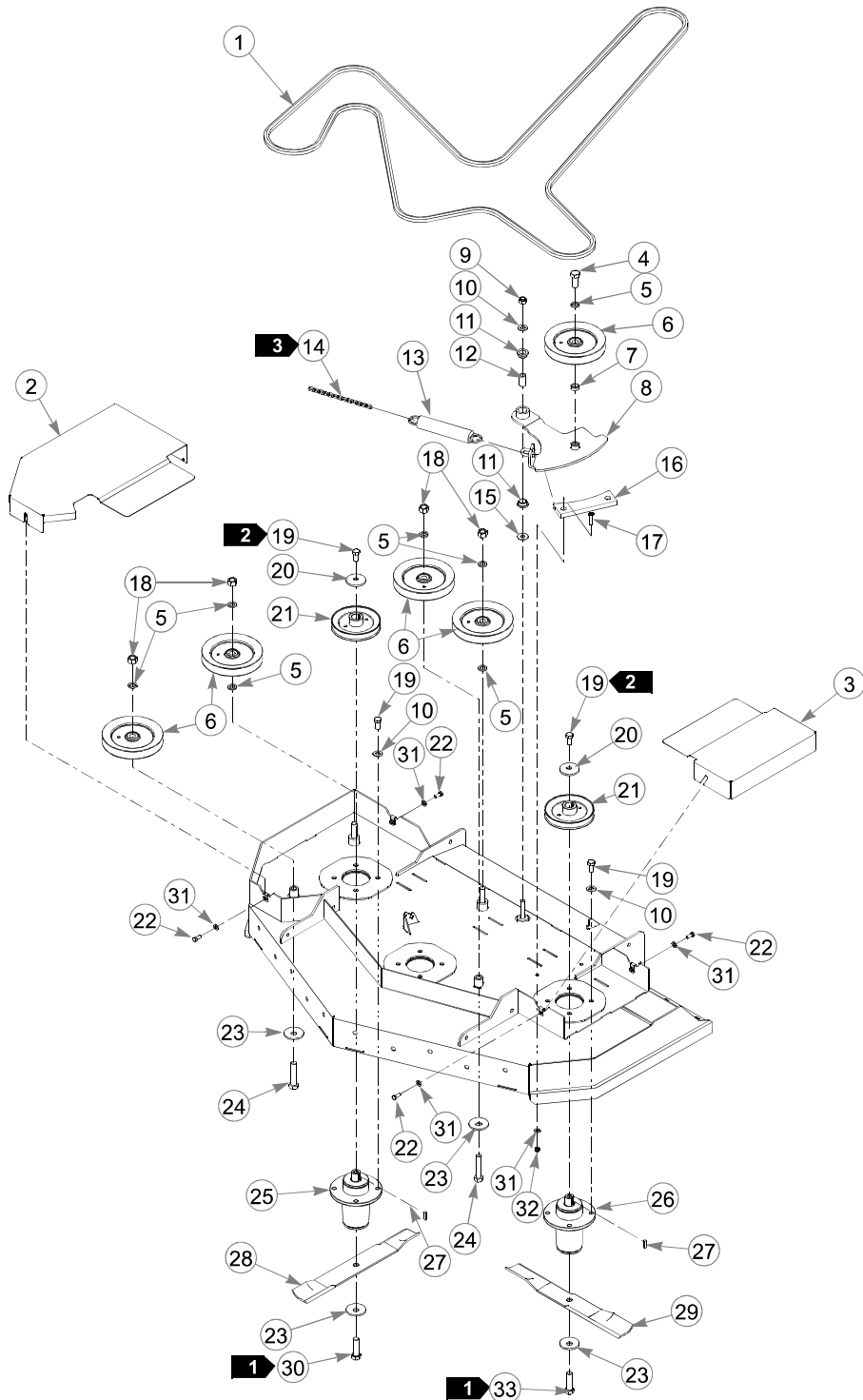
## 54" Rear Discharge Deck Assy–S/N Prior to 08010000

ITEM NO.	SERVICE PART NO.	MFG. PART NO.	QTY.	DESCRIPTION	
2	1	548644CE	107933	1	54" REAR DISCHARGE DECK W/A
	2	108066	108066	1	RD DECK GUARD
	3	768523	768523	12	FW .343 X .687 X .051/.080 HD ZN
	4	086660	086660	6	NT .375-16 HX LK NY
	5	767954	767954	26	FW .406 X .812 X .060 SAE HD ZN
	6	025395	025395	12	CB .375-16 X 1.00 STD CD
	7	601069	601069	4	CN .312-18X.200 MAX THK
	8	015495	015495	2	STRAIGHT GREASE FITTING
	9	349803	349803	1	PUSHER
	10	036244	036244	20	CS .375-16 X 1.00 HX G5 ZN
	11	107975	107975	1	54" REAR DISCHARGE FRONT ANGLE
	12	781708	N/A	4	CS .500-13 X 4.25 HX G5 ZN
	13	767962	N/A	8	FW .531 X 1.063 X.090 SAE HD ZN
	14	053199	N/A	4	NT .500-13 HX JAM ZN
	15	781567	781567	4	NT .50-13 HXZY NL
	16	031997	N/A	4	ANTI-SCALP WHEEL
	17	106724	106724	1	RD DEFLECTOR CLAMP LS ANGLE
	18	106666	106666	1	RD DEFLECTOR CLAMP RS ANGLE
	19	601113	601113	2	RD SIDE FLAP
	20	107972	107972	2	ANGLE RD DISCHARGE FLAP
	21	601017	601017	2	RD REAR FLAP
	22	107973	107973	2	ANGLE DECK STIFFENER
	23	106591	106591	2	RD DECK GUARD BRACKET
	24	778399	778399	2	FW .781 X 1.375 X .250 ZNYC
	25	016253	016253	12	CB .312-18 X .750 FUL ZN
	26	058776	058776	12	NT .312-18 HXZY NL
	27	107978	107978	2	AIR FLOW BAFFLE
	28	600994	600994	14	RIVET NUT, 3/8-16 THREAD
1		788166	788166	4	ANTI SCALP WHEEL ASSEMBLY

### NOTES:

1. Includes Items 12 through 14 and 16.
2. Service part deck includes decals, see "54" Rear Discharge Deck Decals" on page 9-6.

# 54" Rear Disch. Deck Pulley Assy—S/N 08100000 & Higher



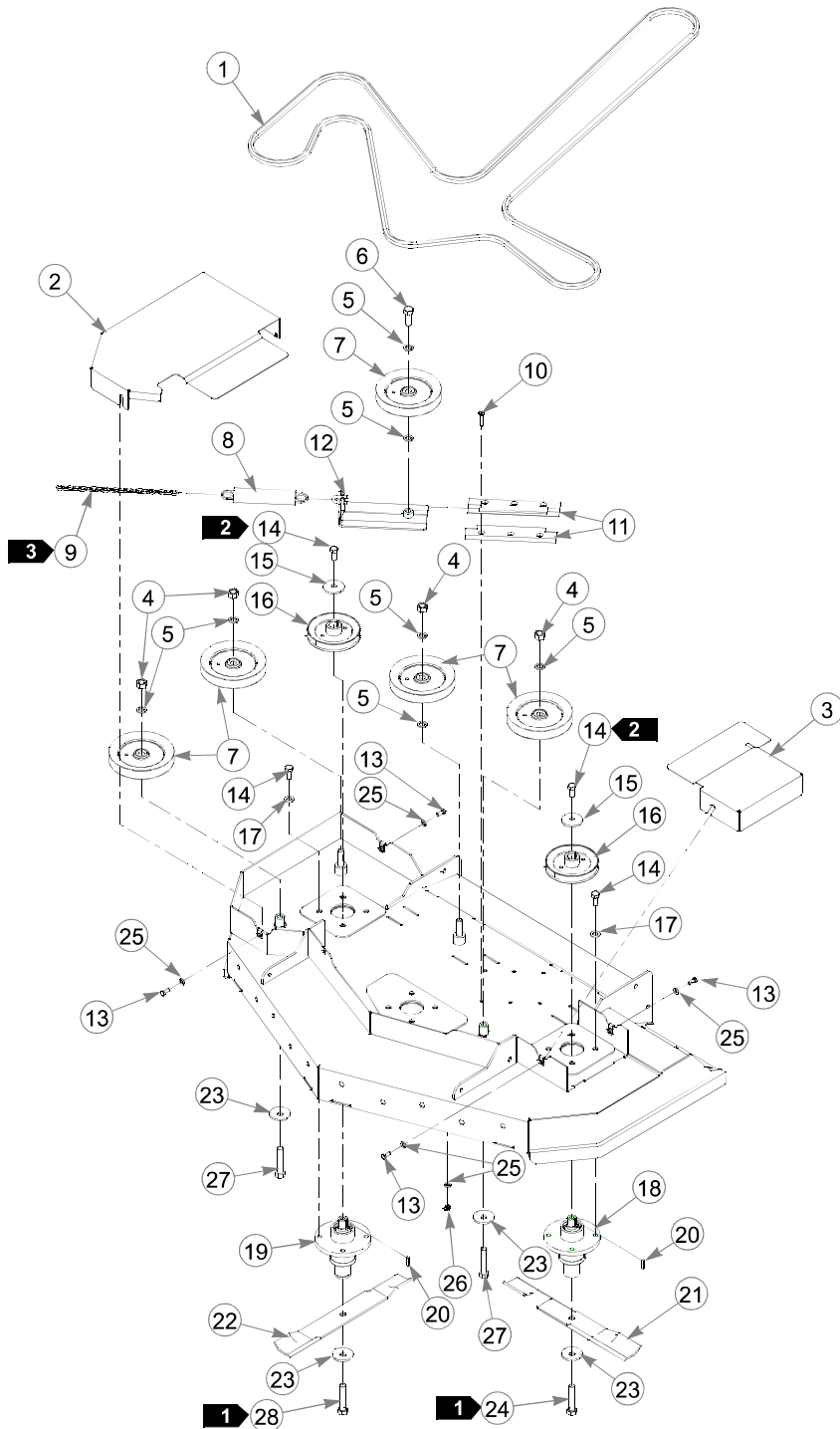
## 54" Rear Disch. Deck Pulley Assy—S/N 08100000 & Higher

ITEM NO.	SERVICE PART NO.	MFG. PART NO.	QTY.	DESCRIPTION	
1	601015	601015	1	54" REAR DISCHARGE DECK BELT	
2	110449	110449	1	RIGHT 54" REAR DISCHARGE PULLEY COVER	
3	110448	110448	1	LEFT 54" REAR DISCHARGE PULLEY COVER	
4	794446	794446	1	CS .625-11 X 1.500 HX G5	
5	028118	028118	7	FW .62 X 1.00 X .134 ZN	
6	796714	796714	5	6" HB IDLER PULLEY RD	
7	600296	600296	1	DECK IDLER SPACER	
8	109948	109948	1	IDLER ARM W/A	
9	781567	781567	1	NT .500-13 HX G8 ZY NL	
10	767962	767962	13	FW .531 X 1.063 X .090 SAE HD ZN	
11	770867	770867	2	PLASTIC BUSHING .750X1(FS)	
12	109549	109549	1	IDLER PIVOT BUSHING	
13	781302	781302	1	IDLER SPRING	
14	259812	259812	1	CHAIN DECK LIFT SPRING	
15	704759	704759	1	FW .500X 1.250X.075 ZNY	
16	601779	601779	1	IDLER GUIDE UHMW	
17	797910	797910	2	CS .312-18X1.50FLT SH ZY	
18	016972	016972	4	NT .625-11 HX G5 ZNYC	
19	016527	016527	15	CS .500-13 X 1.00 HX G5 ZN	
20	752386	752386	3	CW .515X 2.25X .204 ZN	
21	798967	798967	3	B-SECTION PULLEY 5.44 EOD	
22	034280	034280	4	CS .312-18X .750 HX G5	
23	782474	782474	5	CW .631 X 2.250 X .187 PNT	
24	783738	783738	2	CS .625-11X3.00 FULL HX G5 ZN	
<b>6</b>	25	601819	601819	1	DECK SPINDLE ASSEMBLY
<b>4</b>		796680X	796680	1	REAR DISCHARGE DECK SPINDLE ASSEMBLY
<b>6</b>	26	601630	601630	2	DECK SPINDLE ASSEMBLY
<b>5</b>		796235X	796235	2	DECK SPINDLE ASSY
	27	212472	212472	3	KEY 1/4 SQ X 1.00 LONG
	28	601013	601013	1	BLADE, F18.50"-L-F-CCW
	29	601012	601012	2	BLADE F18.50"-L-F-CW
	30	796722	796722	1	CS .625-11 X 3.00 LH HX G
	31	768523	768523	5	FW .343 X .687 X .051/.080 HD ZN
	32	058776	058776	1	NT .312-18 HXZY NL
	33	029934	029934	2	CS .625-11 X 3.00 HX G5 ZNYC

### NOTES:

1. Torque to 160 N-m.
2. Torque to 88.1-101.7N-m.
3. See "54" Rear Disch. Deck Belt Routing & Tensioning" on page 8-5 for belt tensioning.
4. See "Spindle Assembly—796680" on page 7-19 for breakdown. Used on mowers with serial numbers prior to 08100000.
5. See "Spindle Assembly—796235" on page 7-18 for breakdown. Used on mowers with serial numbers prior to 08100000.
6. Used on mowers with serial numbers higher than 08100000.

# **54" Rear Discharge Deck Pulley Assy—S/N Prior to 08100000**



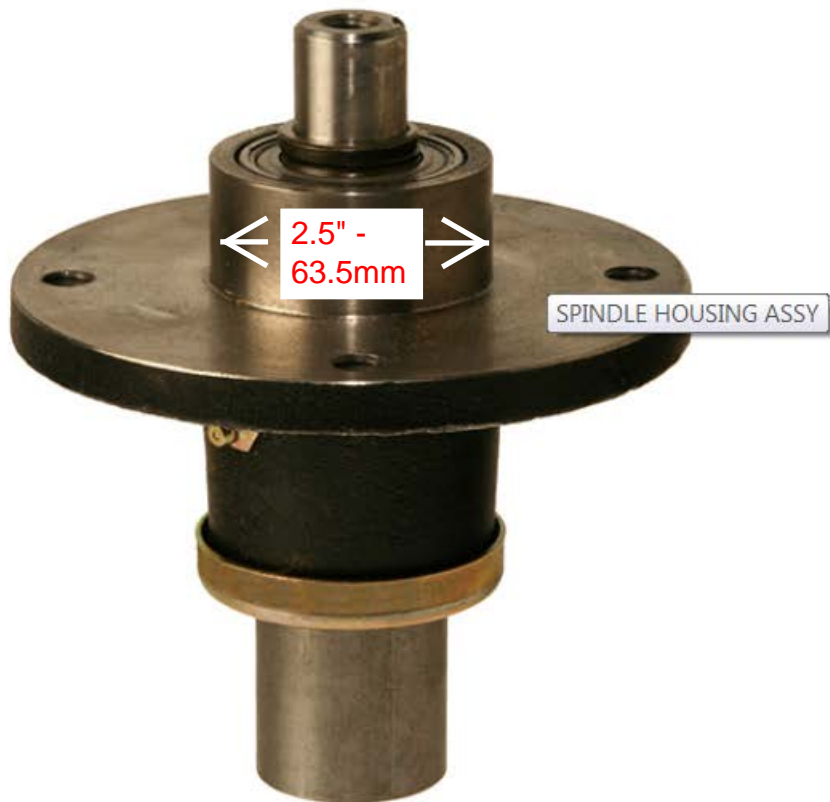


## **54" Rear Discharge Deck Pulley Assy—S/N Prior to 08100000**

ITEM NO.	SERVICE PART NO.	MFG. PART NO.	QTY.	DESCRIPTION
1	601015	601015	1	54" REAR DISCHARGE DECK BELT
2	107945	107945	1	RIGHT 54" REAR DISCHARGE PULLEY COVER
3	107946	107946	1	LEFT 54" REAR DISCHARGE PULLEY COVER
4	016972	016972	4	NT .625-11 HX G5 ZNYC
5	028118	028118	7	FW .62 X 1.00 X .134 ZN
6	794446	794446	1	CS .625-11 X 1.500 HX G5
7	796714	796714	5	6" HB IDLER PULLEY RD
8	781302	781302	1	IDLER SPRING
9	373191	059931	1	SIDE MOUNT CHAIN (21 LINKS)
10	797910	797910	6	CS .312-18 X 1.250 FLT SH ZNYC
11	601434	601434	1	UHMW IDLER SLIDE
12	350884	350884	1	REAR DISCHARGE DECK IDLER
13	034280	034280	4	CS .312-18X .750 HX G5
14	016527	016527	15	CS .500-13 X 1.00 HX G5 ZN
15	752386	752386	3	FW .510 X 1.75 X .18 ZN
16	798967	798967	3	B-SEC PULLEY 5.44 EOD
17	767962	767962	12	FW .531 X 1.063 X .090 SAE HD ZN
<b>4</b>	796235X	796235	2	DECK SPINDLE ASSY
<b>5</b>	796680X	796680	1	REAR DISCHARGE DECK SPINDLE ASSEMBLY
20	212472	212472	3	KEY 1/4 SQ X 1.00 LONG
21	601012	601012	2	BLADE F18.50"-L-F-CW
22	601013	601013	1	BLADE, F18.50-L-F-CCW
23	782474	782474	5	CW .631 X 2.250 X .187 PNT
24	029934	029934	2	CS .625-11 X 3.00 HX G5 ZNYC
25	768523	768523	4	FW .343 X .687 X .051/.080 HD ZN
26	058776	058776	4	NT .312-18 HXZY NL
27	783738	783738	2	CS .625-11X3.00 FULL HX G5 ZN
28	796722	796722	1	CS .625-11 X 3.00 LH HX G

### NOTES:

1. Torque to 160 N-m.
2. Torque to 88.1-101.7N-m.
3. See "54" Rear Disch. Deck Belt Routing & Tensioning" on page 8-5 for belt tensioning.
4. See "Spindle Assembly—796235" on page 7-18 for breakdown.
5. See "Spindle Assembly—796680" on page 7-19 for breakdown.
6. Item 11 (601434) replaces idler slide components 600171, 600189, and 786335 found on mowers with serial numbers prior to 08010000.



Name: SPINDLE HOUSING ASSY

Part Number: 796235X

Status: ACT

Price Code: PS

Item Ship Length (in): 6.40

Item Ship Width (in): 6.10

Item Ship Height (in): 6.80

Item Weight (lb): 8.890

796680X CCW/LH  
thread blade bolt.  
Housing painted RED.

Used in decks from 05011098 and XR7 Decks up to 09110001 in some models.  
If the spindle needed does not look like this suggest 601630-601819 spindle assembly on page 2



Name: SPINDLE ASSY, 3" PILOT

Part Number: 601630

Status: ACT

Price Code:

Item Ship Length (in): 5.90

Item Ship Width (in): 5.95

Item Ship Height (in): 7.10

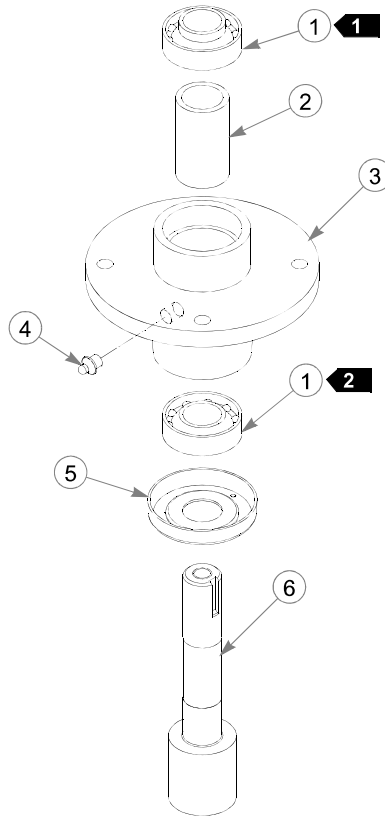
Item Weight (lb): 12.115

601819 CCW/LH  
thread blade bolt.  
Housing painted RED.

This spindle assembly began in some decks after s/n 08100001. The earlier spindle assembly is 796235X-796680X.

SB508 lists the information for the change from 601630-601819 to 604255-604256 spindle assemblies

## **Spindle Assembly-796235**



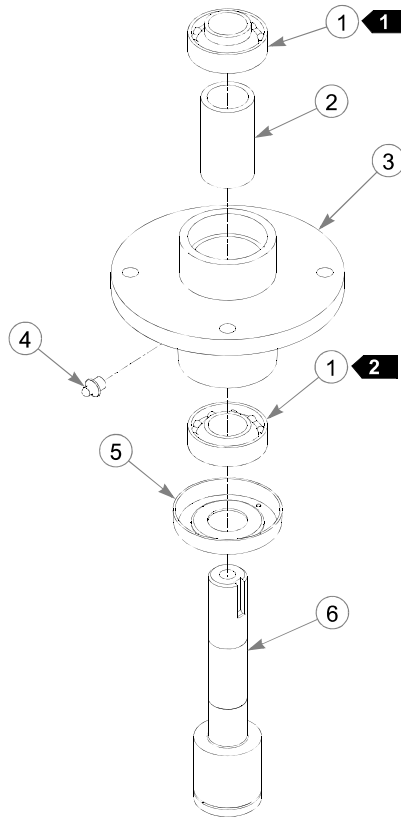
ITEM NO.	SERVICE PART NO.	MFG. PART NO.	QTY.	DESCRIPTION
1	077123	N/A	2	BEARING W/O COLLAR
2	766204	N/A	1	BLADE SPINDLE BUSHING
3	034843	N/A	1	CAST SPINDLE HOUSING
4	012005	N/A	1	GREASE FITTING
5	600893	N/A	1	BEARING DUST COVER
6	796227	N/A	1	SADDLELESS SPINDLE SHAFT

### **NOTES:**

1. Install upper bearing with extended inner race up.
2. Install lower bearing with extended inner race down.
3. Apply grease to zerk.

---

## **Spindle Assembly-796680**



---

ITEM NO.	SERVICE PART NO.	MFG. PART NO.	QTY.	DESCRIPTION
1	077123	N/A	2	BEARING W/O COLLAR
2	766204	N/A	1	BLADE SPINDLE BUSHING
3	034843	N/A	1	CAST SPINDLE HOUSING
4	012005	N/A	1	GREASE FITTING
5	600893	N/A	1	BEARING DUST COVER
6	796698	N/A	1	SPINDLE SHAFT

---

### **NOTES:**

1. Install upper bearing with extended inner race up.
2. Install lower bearing with extended inner race down.
3. Apply grease to zerk.

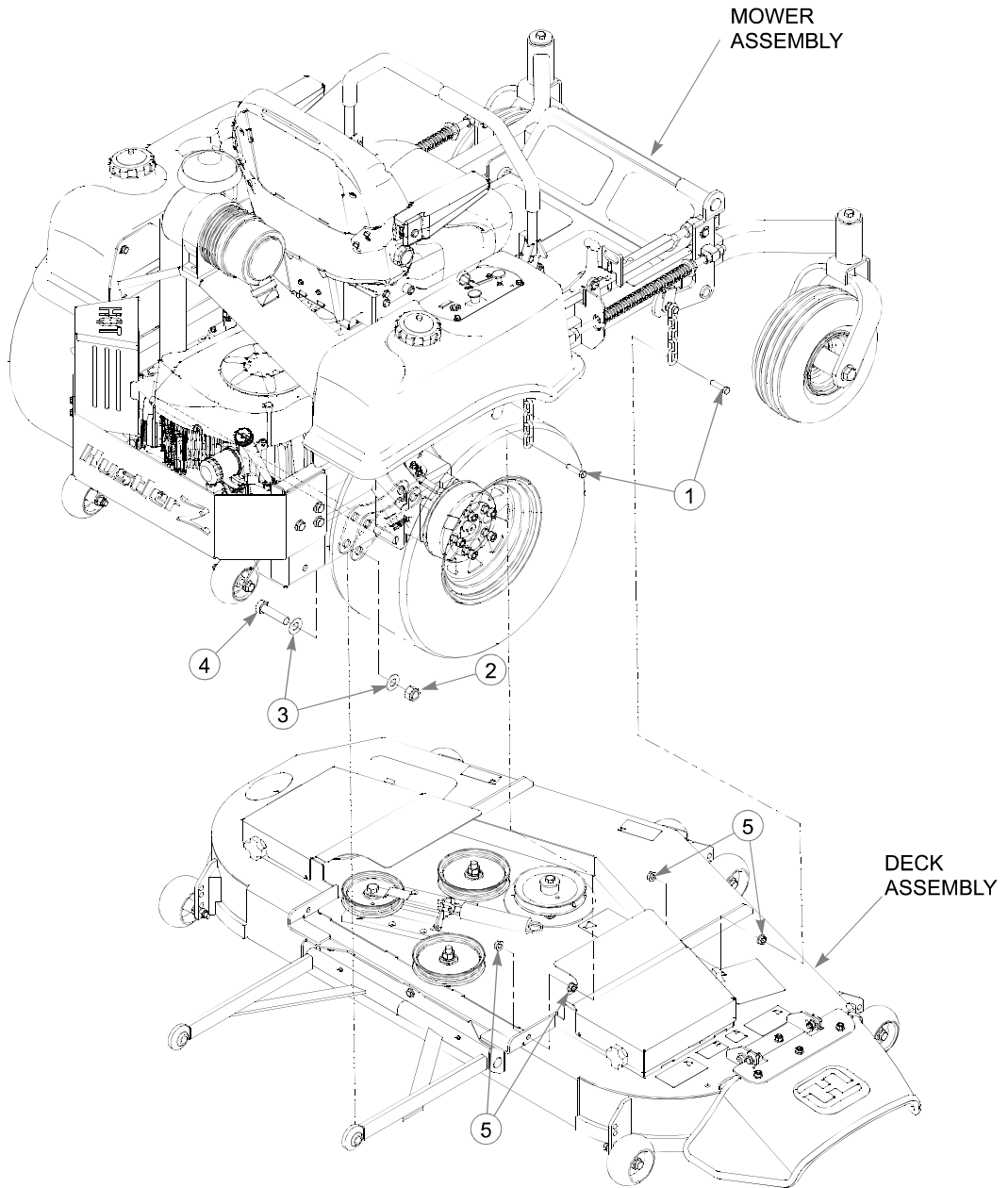
---

---

## Section 8

Deck Installation . . . . .	8-2
54" Side Disch. Deck Belt Routing & Tensioning . . . . .	8-4
54" Rear Disch. Deck Belt Routing & Tensioning . . . . .	8-5
Seat Installation—S/N 09120554 & Higher . . . . .	8-6
Seat Installation—S/N 08010000–09120554. . . . .	8-8
Seat Installation—S/N Prior to 08010000 . . . . .	8-10
ROPS Installation . . . . .	8-12

# Deck Installation





---

## **Deck Installation**

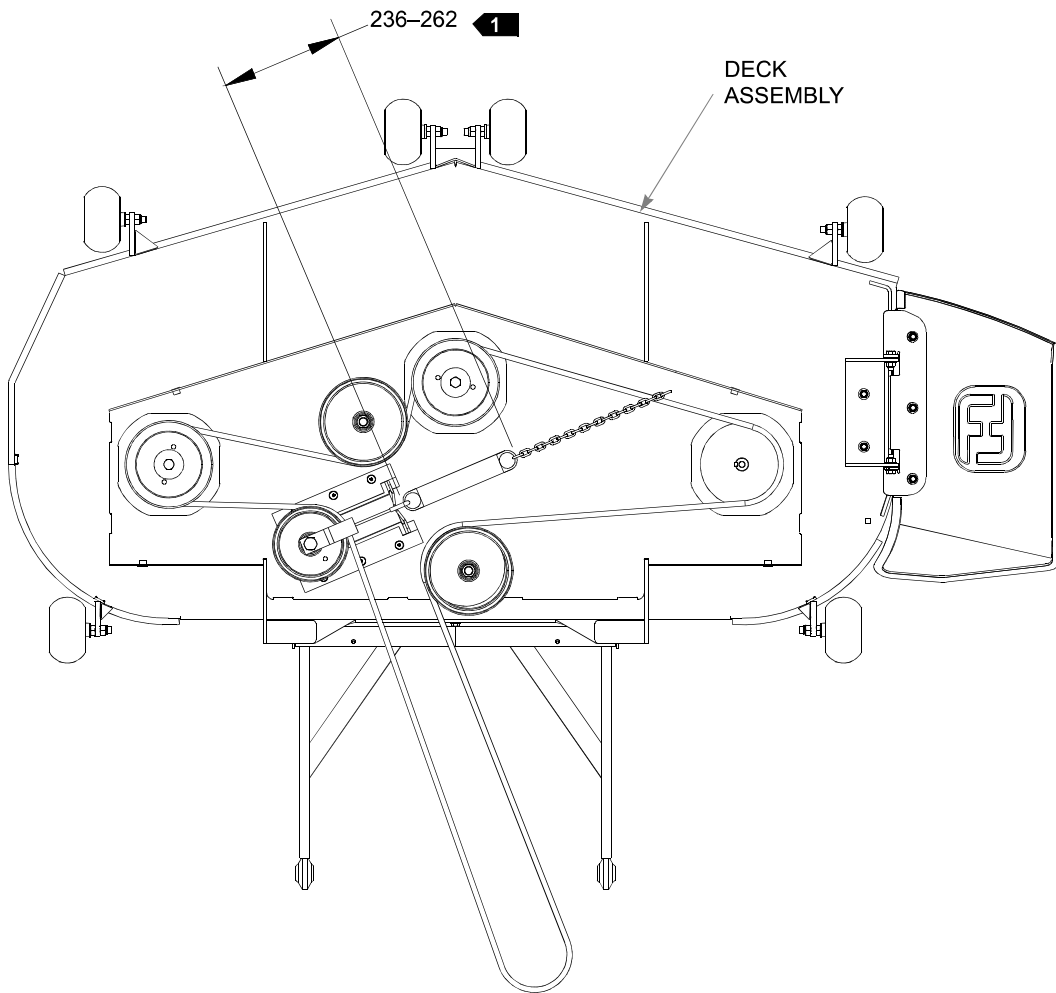
<b>ITEM NO.</b>	<b>SERVICE PART NO.</b>	<b>MFG. PART NO.</b>	<b>QTY</b>	<b>DESCRIPTION</b>
1	055749	055749	4	CS .437-14 X 1.750 HX G5 ZN
2	061101	061101	2	NT .750-10 HX NL ZN
3	025296	025296	4	FW .760 X 1.625 X.08 ZN
4	051169	051169	2	CS .750-10 X 3.000 HX G5 ZN
5	704643	704643	8	NT .437-14 HX FLG ZN

---

### **NOTES:**

---

## **54" Side Disch. Deck Belt Routing & Tensioning**



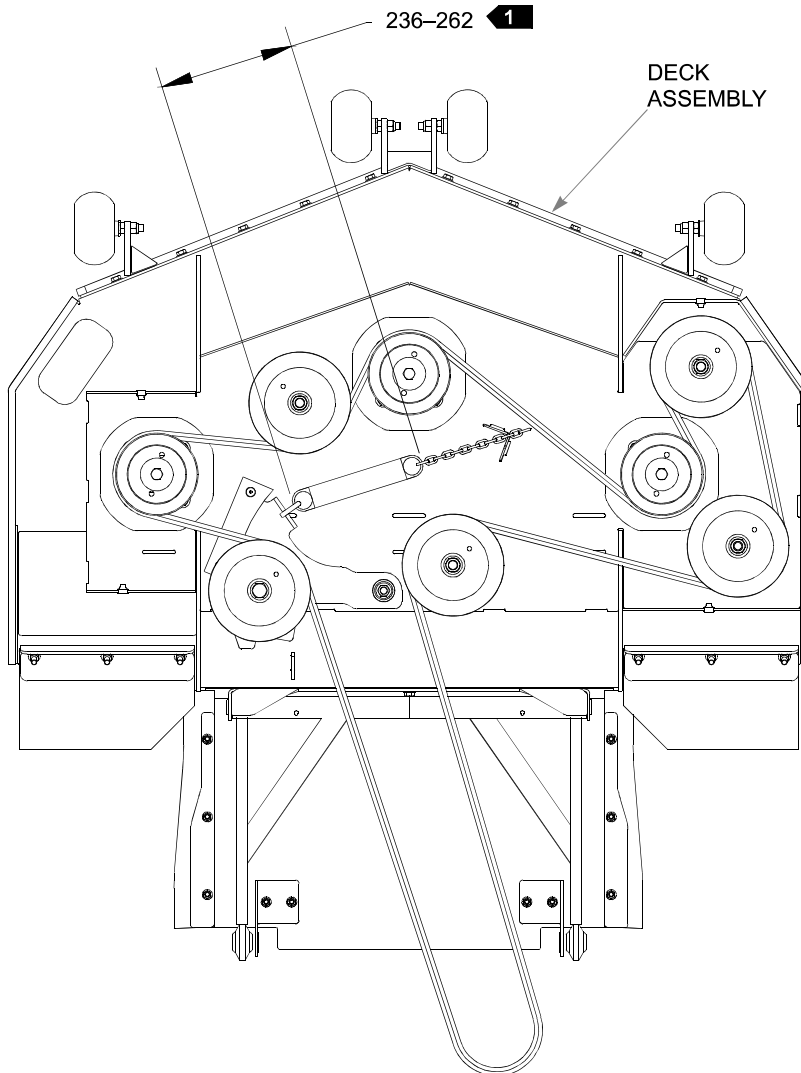
---

### **NOTES:**

1. Spring length after tensioning belt. Measure spring from outside of hook to outside of hook.
2. Route belt as shown.

---

## ***54" Rear Disch. Deck Belt Routing & Tensioning***

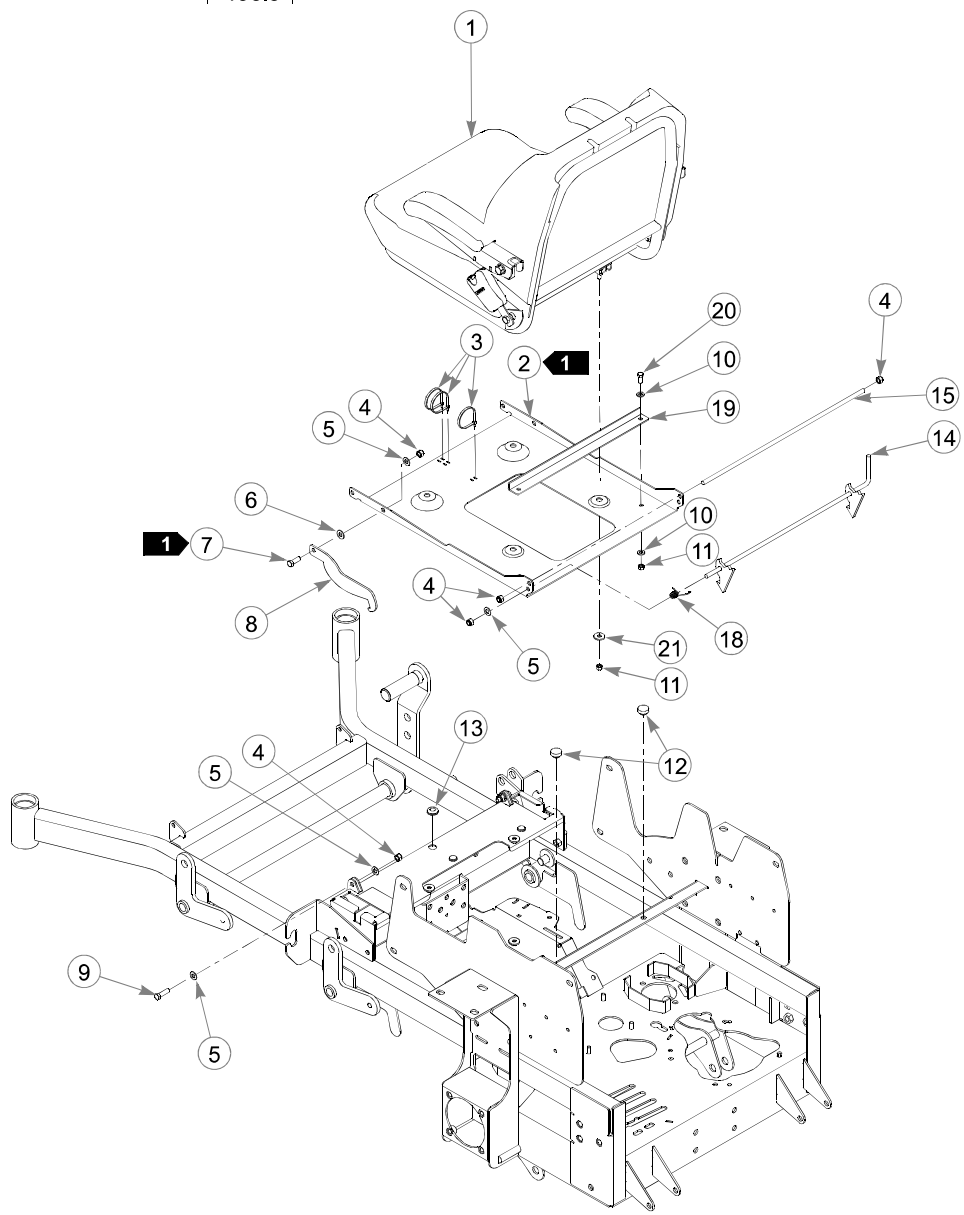
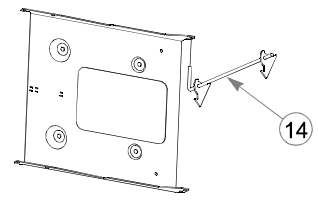
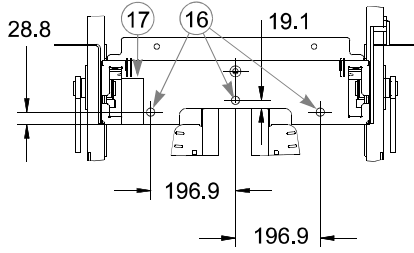


---

### **NOTES:**

1. Spring length after tensioning belt. Measure spring from outside of hook to outside of hook.
2. Route belt as shown.

# Seat Installation—S/N 09120554 & Higher



---

## **Seat Installation—S/N 09120554 & Higher**

<b>ITEM NO.</b>	<b>SERVICES PART NO.</b>	<b>MFG. PART NO.</b>	<b>QTY</b>	<b>DESCRIPTION</b>
1	602202	602202	1	STANDARD SEAT
2	109307	109307	1	SEAT PAN
3	000331	000331	3	BLACK CABLE TIE
4	086660	086660	6	NT .375-16 HX LK NY
5	767954	767954	6	FW .406 X .812 X .060 SAE HD ZN
6	724716	724716	1	FIBER WASHER
7	350421	350421	1	SEAT PAN STOP
8	036244	036244	1	CS .375-16 X 1.000 HX G5 ZN
9	052860	052860	2	CS .375-16 X1.250 HX G5 ZN
10	768523	768523	4	FW .343 X .687 X .051/.080 HD ZN/Y
11	034272	034272	6	NT .312-18 HX G5 ZN
12	781880	781880	2	BUMPER
13	080358	080358	1	GM .50 X 1.00 X .75 X .12 GROMMET
14	109274	109274	1	LATCH W/A
15	109283	109283	1	STOP ROD SEAT LATCH
16	781617	781617	3	RUBBER BUMPER
17	722199	722199	1	2" WIDE SCOTCH POLYURETHANE 5.55" LONG
18	783910	783910	1	ROPS LATCH TORSION SPRING
19	108851	108851	1	SEAT STOP
20	034280	034280	4	CS .312-18 X .750 HX G5
21	712927	712927	4	FW .344X 1.00X.12 HRD Z

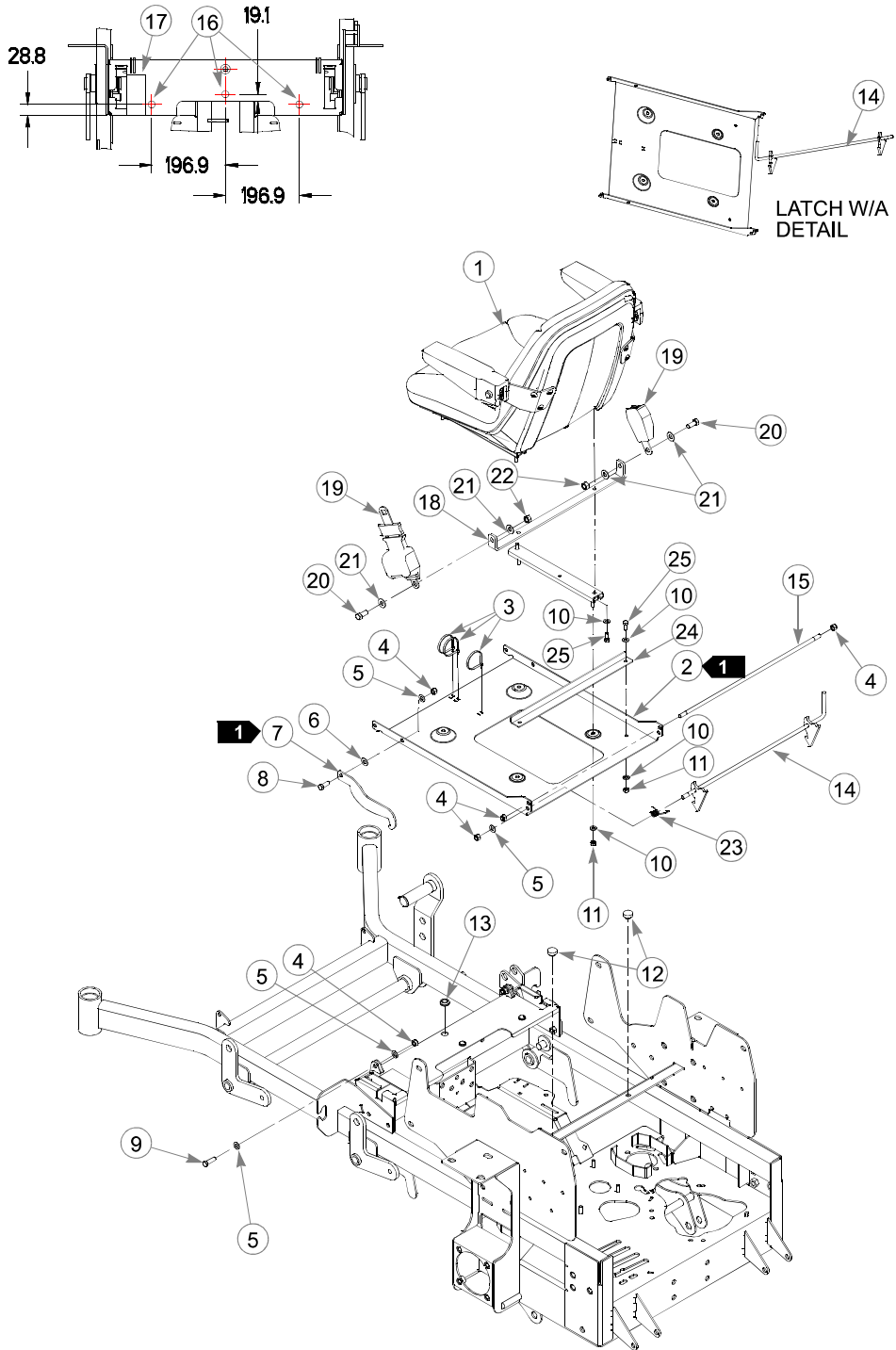
---

### **NOTES:**

1. Must pivot freely.
2. Seat stop is used on mowers with 29 HP Kawasaki engines only.
3. Service parts available for Standard seat;

<b><u>PART NO.</u></b>	<b><u>DESCRIPTION</u></b>
603128	TRACK SET, SEATS INC
603129	SEAT SWITCH, SEATS INC
603130	RS ARMREST, SEATS INC
603151	LS ARMREST, SEATS INC
603131	ARM PAD, SEATS INC
603133	SEAT BELT KIT, SEATS INC
603134	SET OF ARMRESTS

# Seat Installation—S/N 08010000–09120554



---

## **Seat Installation—S/N 08010000–09120554**

ITEM NO.	SERVICES PART NO.	MFG. PART NO.	QTY	DESCRIPTION
1	793661	793661	1	MICHIGAN SEAT
2	109307	109307	1	SEAT PAN
3	000331	000331	3	BLACK CABLE TIE
4	086660	086660	6	NT .375-16 HX LK NY
5	767954	767954	6	FW .406 X .812 X .060 SAE HD ZN
6	724716	724716	1	FIBER WASHER
7	350421	350421	1	SEAT PAN STOP
8	036244	036244	1	CS .375-16 X 1.000 HX G5 ZN
9	052860	052860	2	CS .375-16 X1.250 HX G5 ZN
10	768523	768523	10	FW .343 X .687 X .051/.080 HD ZN/Y
11	034272	034272	6	NT .312-18 HX G5 ZN
12	781880	781880	2	BUMPER
13	080358	080358	1	GM .50 X 1.00 X .75 X .12 GROMMET
14	109274	109274	1	LATCH W/A
15	109283	109283	1	STOP ROD SEAT LATCH
16	781617	781617	3	RUBBER BUMPER
17	722199	722199	1	2" WIDE SCOTCH POLYURETHANE 5.55" LONG
18	794610	794610	1	SEAT BELT CROSS BAR
19	601444	601444	1	SEAT BELT
20	797076	797076	2	CS .437-20X1.00 HXG8ZNYC
21	017129	017129	6	FW .440X 1.000X.083 ZNY
22	704635	704635	2	NT .437-20 HX GR5 ZNYC
23	783910	783910	1	ROPS LATCH TORSION SPRING
24	108851	108851	1	SEAT STOP
25	034280	034280	4	CS .312-18 X .750 HX G5

---

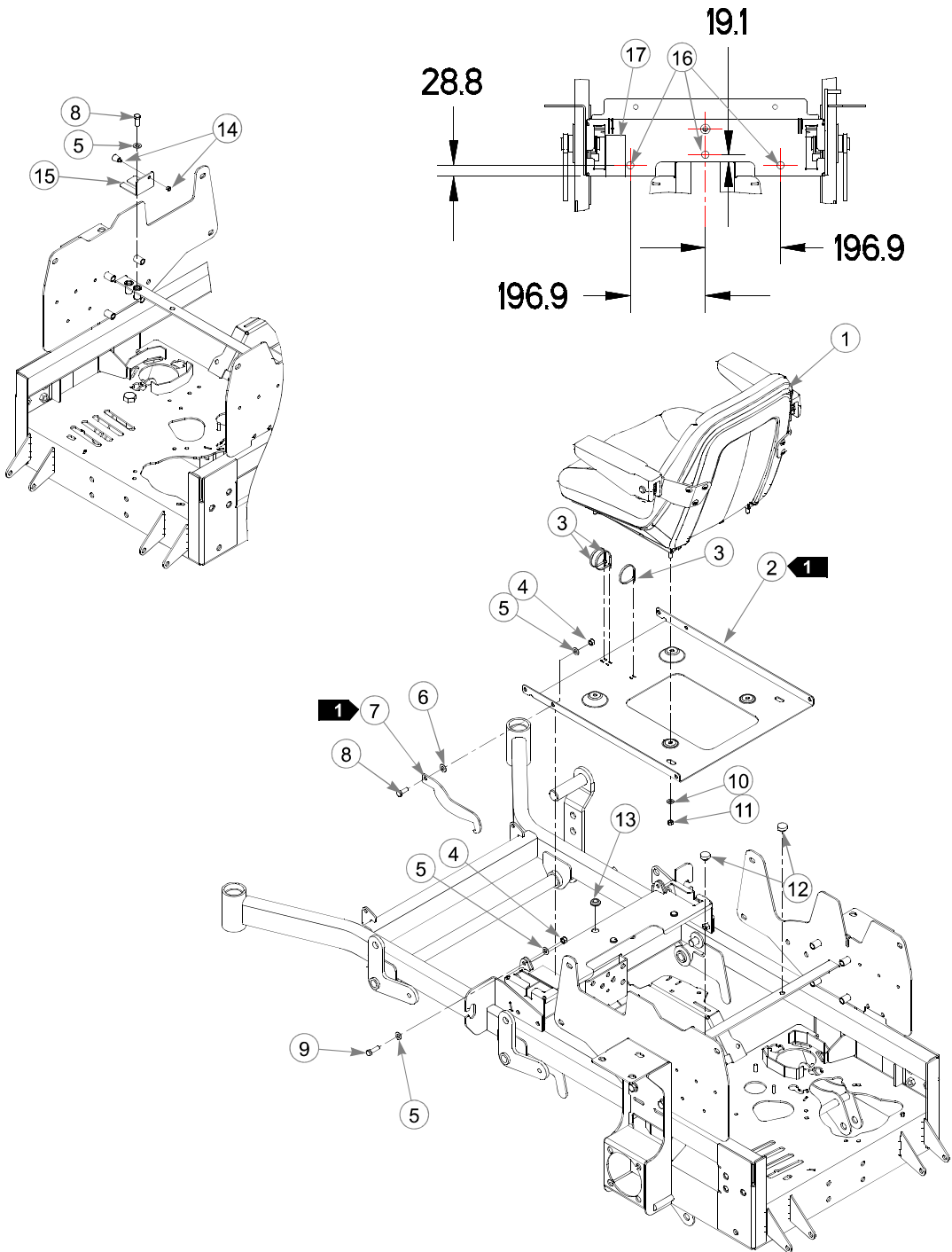
### NOTES:

1. Must pivot freely.
2. Seat stop is used on mowers with 29 HP Kawasaki engines only.
3. Service parts available for Michigan Standard seat;

<u>PART NO.</u>	<u>DESCRIPTION</u>
793307	SLIDE KIT
793315	SEAT SWITCH
793331	ARMREST KIT (OPTIONAL SQUARE STYLE)
793349	L.H. ARMREST ASSMBLY (SQUARE STYLE W/ BRACKETS)
793356	R.H. ARMREST ASSMBLY (SQUARE STYLE W/ BRACKETS)
797456	ARMREST KIT (OPTIONAL ROUND STYLE)
767464	L.H. ARMREST ASSMBLY (ROUND STYLE W/ BRACKETS)
797472	R.H. ARMREST ASSMBLY (ROUND STYLE W/ BRACKETS)
797480	ONE ARMREST ONLY (ROUND STYLE W/O BRACKET)
793273	ARMREST STOP ASSY

---

# Seat Installation—S/N Prior to 08010000





---

## **Seat Installation—S/N Prior to 08010000**

<b>ITEM NO.</b>	<b>SERVICES PART NO.</b>	<b>MFG. PART NO.</b>	<b>QTY</b>	<b>DESCRIPTION</b>
1	793661	793661	1	MICHIGAN SEAT
2	350041	350041	1	SEAT PAN
3	000331	000331	3	BLACK CABLE TIE
4	086660	086660	3	NT .375-16 HX LK NY
5	767954	767954	7	FW .406 X .812 X .060 SAE HD ZN
6	724716	724716	1	FIBER WASHER
7	350421	350421	1	SEAT PAN STOP
8	036244	036244	3	CS .375-16 X 1.000 HX G5 ZN
9	052860	052860	2	CS .375-16 X1.250 HX G5 ZN
10	768523	768523	4	FW .343 X .687 X .051/.080 HD ZN/Y
11	034272	034272	4	NT .312-18 HX G5 ZN
12	781880	781880	2	BUMPER
13	080358	080358	1	GM .50 X 1.00 X .75 X .12 GROMMET
14	748756	748756	1	LATCH SPRING PLUNGER
15	350462	350462	1	SEAT LATCH BRACKET
16	781617	781617	3	RUBBER BUMPER
17	722199	722199	1	2" WIDE SCOTCH POLYURETHANE 5.55" LONG

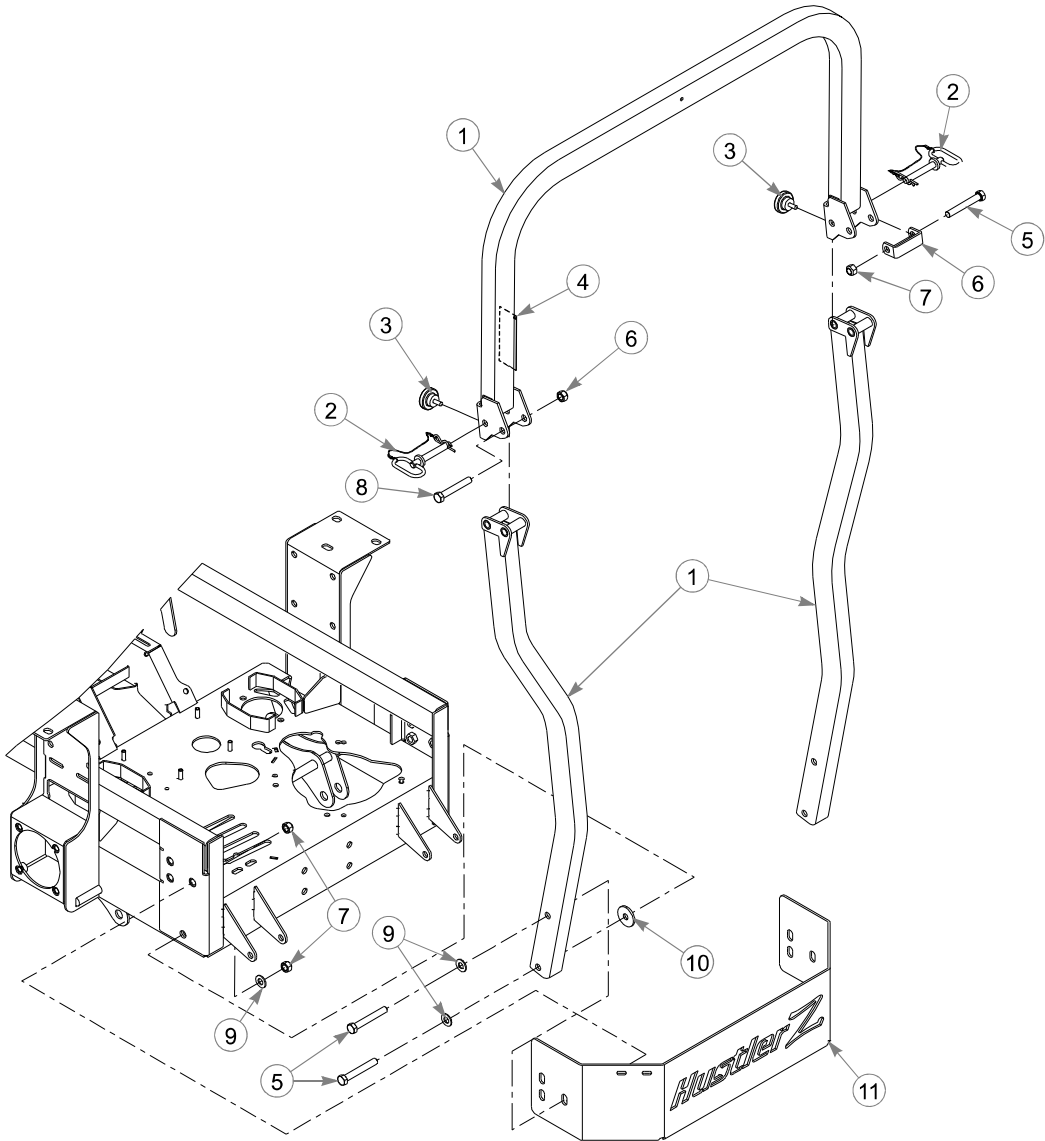
---

### **NOTES:**

1. Must pivot freely.
2. Service parts available for Michigan Standard seat;

<b><u>PART NO.</u></b>	<b><u>DESCRIPTION</u></b>
793307	SLIDE KIT
793315	SEAT SWITCH
793331	ARMREST KIT (OPTIONAL SQUARE STYLE)
793349	L.H. ARMREST ASSMBLY (SQUARE STYLE W/ BRACKETS)
793356	R.H. ARMREST ASSMBLY (SQUARE STYLE W/ BRACKETS)
797456	ARMREST KIT (OPTIONAL ROUND STYLE)
767464	L.H. ARMREST ASSMBLY (ROUND STYLE W/ BRACKETS)
797472	R.H. ARMREST ASSMBLY (ROUND STYLE W/ BRACKETS)
797480	ONE ARMREST ONLY (ROUND STYLE W/O BRACKET)
793273	ARMREST STOP ASSY

# **ROPS Installation**



---

## **ROPS Installation**

ITEM NO.	SERVICES PART NO.	MFG. PART NO.	QTY	DESCRIPTION
1	601440	N/A	1	ROPS
2	601471	N/A	2	LYNCH PIN W/ LANYARD
3	601470	N/A	2	KNOB
4	601560	N/A	1	ROPS WARNING DECAL
5	061812	N/A	5	CS .500-13 X 3.500 HX G5
6	601472	N/A	1	ROPS STOP
7	023317	N/A	6	NT .500-13 UNT LK G5 ZN
8	077859	N/A	1	CS .500-13 X 3.250 HX G5
9	767962	N/A	4	FW .531 X 1.063 X .090 SAE
10	601473	N/A	2	SPACER WASHER
11	349704	N/A	1	ENGINE CAGE MOUNT PLATE

---

### **NOTES:**

1. ROPS come standard on all Hustler Z units with serial numbers 08010000 and higher. Prior to this serial number, ROPS were optional for Hustler Z mowers.

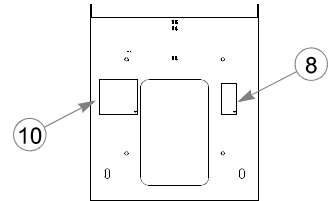
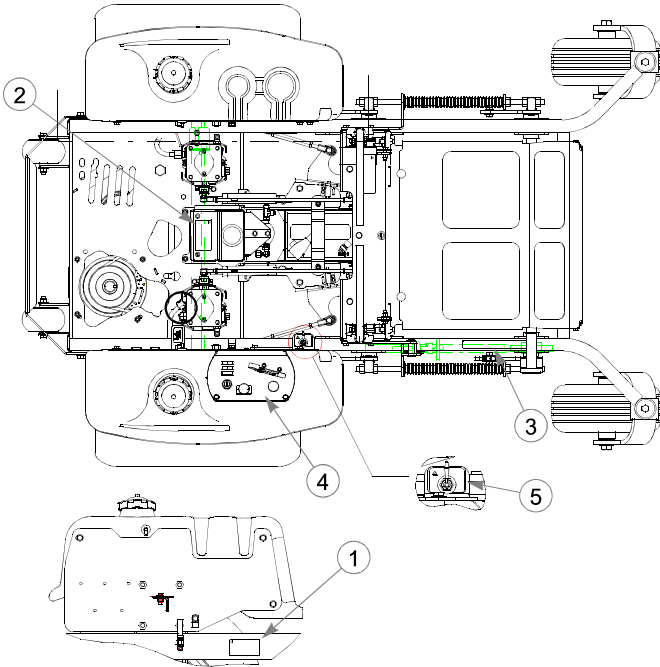
---

---

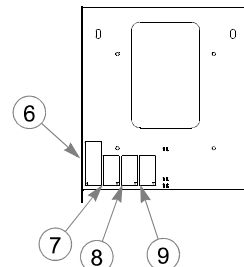
## Section 9

Mower Decals .....	9-2
60" Side Discharge XR7 Deck Decals.....	9-4
54" Side Discharge XR7 Deck Decals.....	9-5
54" Rear Discharge Deck Decals .....	9-6

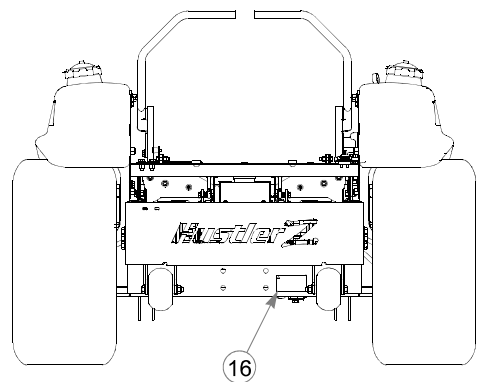
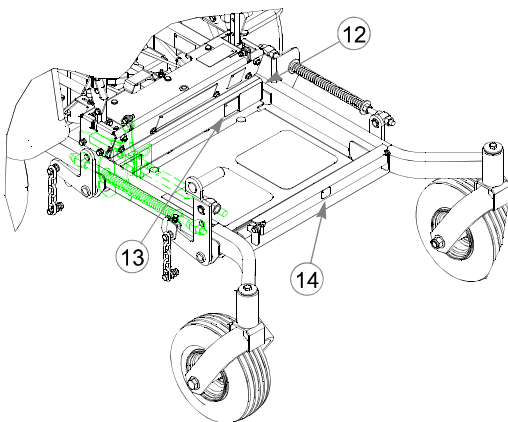
# Mower Decals



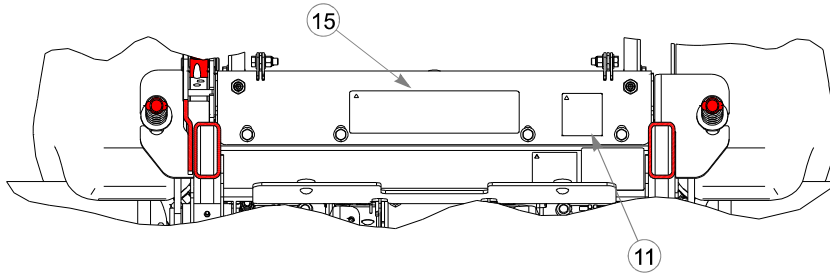
**BOTTOM OF SEAT PAN**



**TOP OF SEAT PAN**



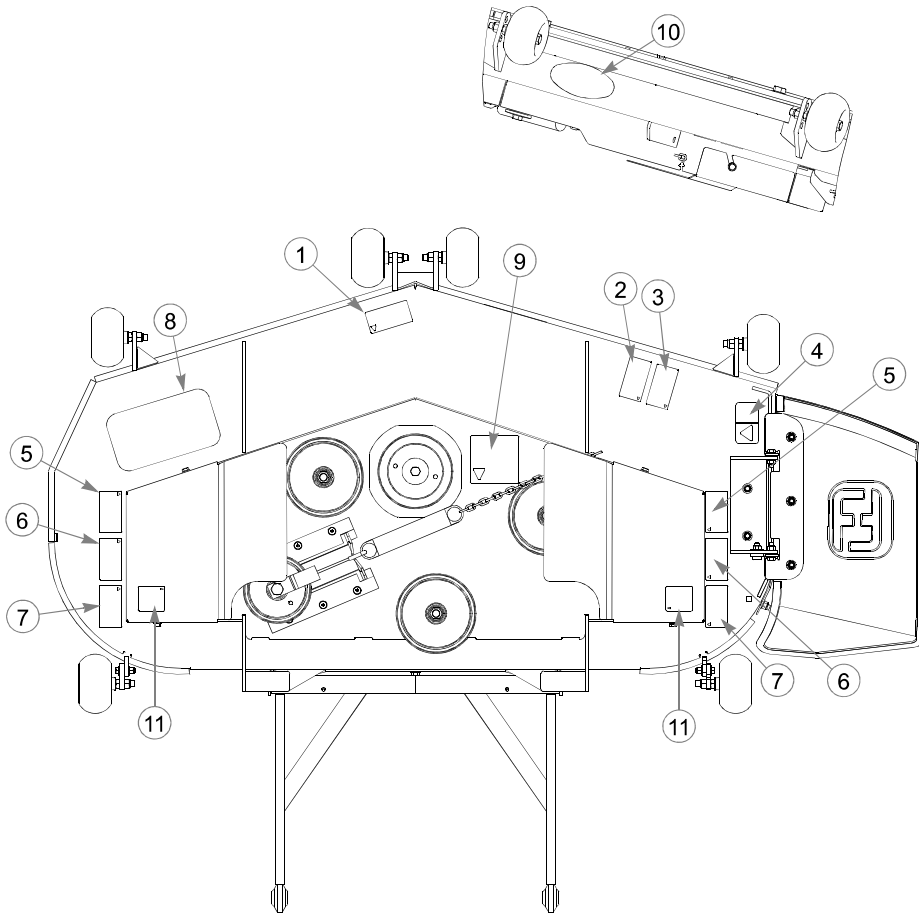
# **Mower Decals**



ITEM NO.	SERVICE PART NO.	MFG. PART NO.	QTY.	DESCRIPTION
1	727008CE	727008CE	1	HYDRAULIC FLUID DECAL - CE
2	779280CE	779280CE	1	HOT DECAL - CE
3	781427CE	781427CE	1	DECK HEIGHT INDICATOR DECAL
4	784702CE	784702CE	1	INSTRUMENT PANEL DECAL - CE
5	791830	791830	1	FUEL INDICATOR DECAL
6	789727CE	789727CE	1	EYE/EAR/FOOT PROTECTION DECAL
7	777029CE	777029CE	1	MAXIMUM ANGLE CE DECAL
8	789719CE	789719CE	1	READ SERVICE MANUAL DECAL - CE
9	789701CE	789701CE	1	READ OWNER'S MANUAL DECAL - CE
10	727016CE	727016CE	1	BATTERY DECAL - CE
11	789776CE	789776CE	1	DBA DECAL - CE
12	N/A	083279	1	TURF PROD SERIAL NO PLATE
13	776310	776310	1	CE MARK DECAL
14	793588	793588	1	HUSTLER NAME PLATE
15	786426	786426	1	HUSTLER Z ID DECAL
16	771436CE	771436CE	1	STABILIZER ROLLERS DECAL - CE

**NOTES:**

## **60" Side Discharge XR7 Deck Decals**

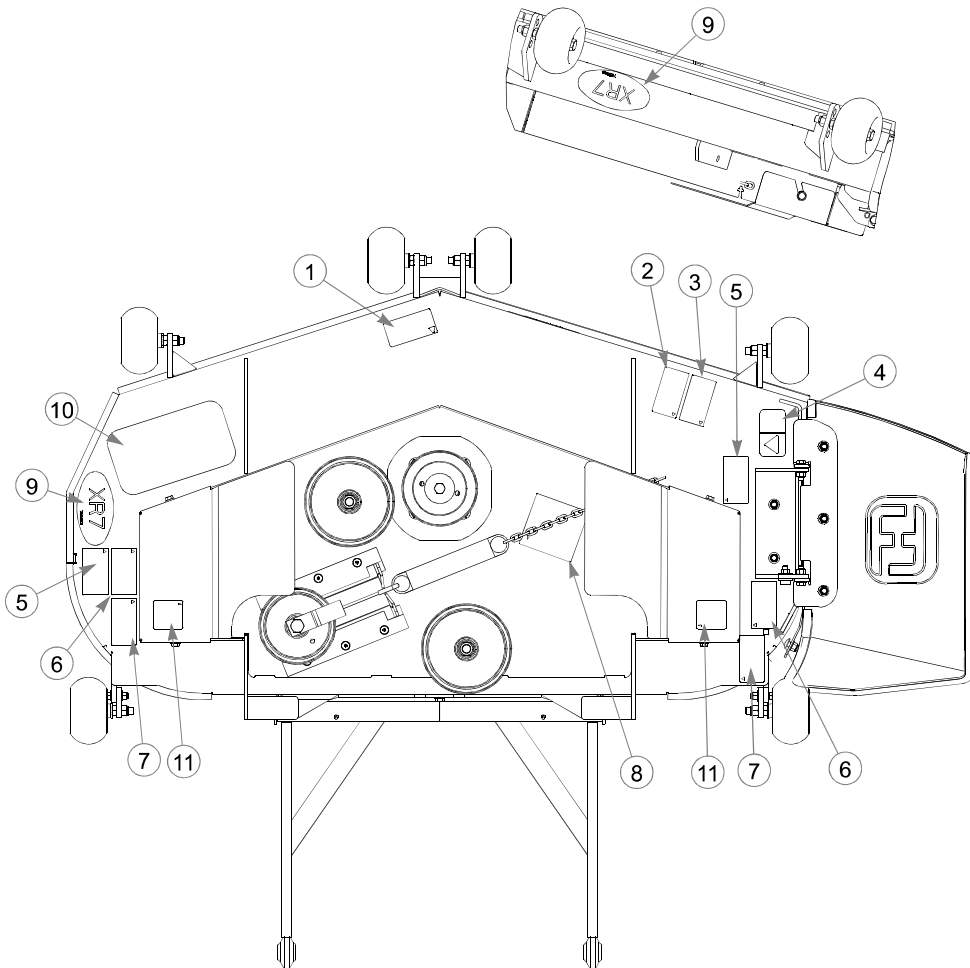


ITEM NO.	SERVICE PART NO.	MFG. PART NO.	QTY.	DESCRIPTION
1	786277	786277	1	60" SIDE DISCHARGE DECK ID DECAL
2	789719CE	789719CE	1	READ SERVICE MANUAL DECAL
3	789701CE	789701CE	1	READ OWNER'S MANUAL DECAL
4	727420CE	727420CE	1	DISCHARGE CHUTE CE DECAL
5	789685CE	789685CE	2	THROWN OBJECT DECAL
6	727453CE	727453CE	2	DECK COVER CE DECAL
7	727438CE	727438CE	2	FINGERS AND TOES DECAL
8	359547	359547	1	STEP TREAD
9	799395CE	799395CE	1	BELT ROUTING DECAL
10	799353	799353	1	XR7 DECK ID DECAL
11	602562	602562	2	DECAL, NO SERVICE

### **NOTES:**



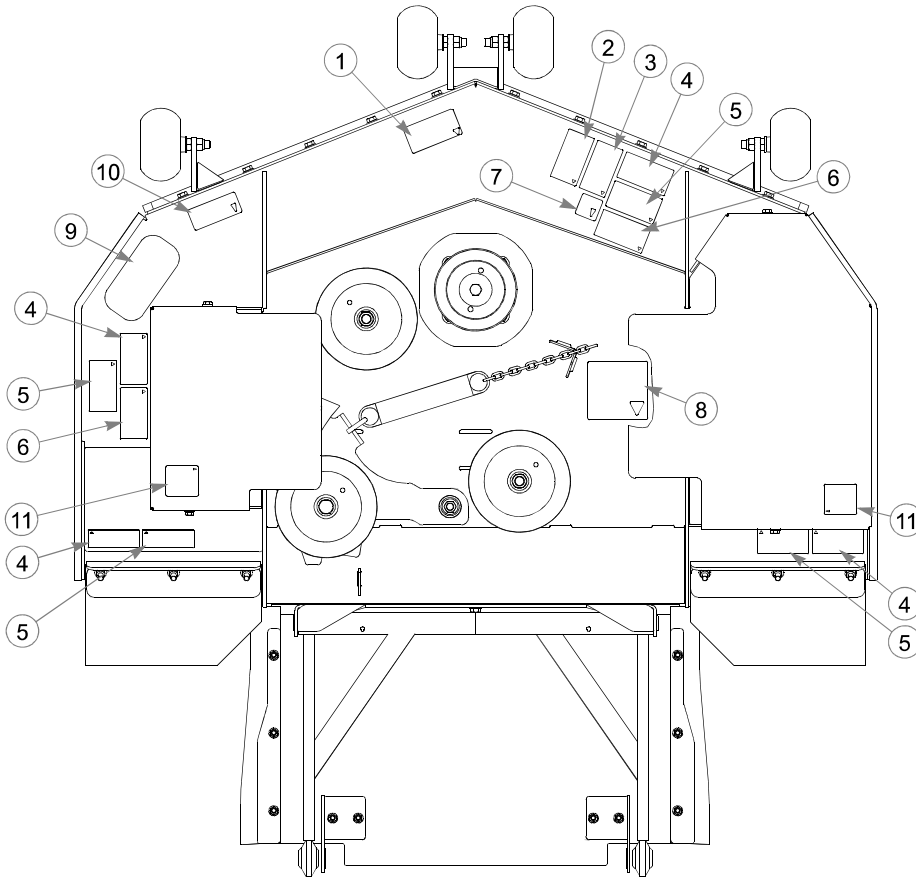
## 54" Side Discharge XR7 Deck Decals



ITEM NO.	SERVICE PART NO.	MFG. PART NO.	QTY.	DESCRIPTION
1	799171	799171	1	54" SIDE DISCHARGE DECK ID DECAL
2	789719CE	789719CE	1	READ SERVICE MANUAL DECAL - CE
3	789701CE	789701CE	1	READ OWNER'S MANUAL DECAL - CE
4	727420CE	727420CE	1	DISCHARGE CHUTE DECAL - CE
5	789685CE	789685CE	2	THROWN OBJECT DECAL
6	727453CE	727453CE	2	DECK COVER DECAL - CE
7	727438CE	727438CE	2	FINGERS & TOES DECAL - CE
8	781419CE	781419CE	1	Z DECK BELT ROUTING DECAL - CE
9	799353	799353	2	XR7 DECK ID DECAL
10	359547	359547	1	STEP TREAD 5.00 X 9.00
11	602562	602562	2	DECAL, NO SERVICE

### NOTES:

## **54" Rear Discharge Deck Decals**



ITEM NO.	SERVICE PART NO.	MFG. PART NO.	QTY.	DESCRIPTION
1	799171	799171	1	54" REAR DISCHARGE DECK ID DECAL
2	789701CE	789701CE	1	READ OWNER'S MANUAL DECAL
3	789719CE	789719CE	1	READ SERVICE MANUAL DECAL
4	789685CE	789685CE	4	THROWN OBJECT DECAL
5	727438CE	727438CE	4	FINGERS AND TOES DECAL
6	727453CE	727453CE	2	CE DECK COVER DECAL
7	727172	727172	1	DECAL 'MADE IN U.S.A.'
8	796953	796953	1	REAR DISCHARGE DECK ROUTING DECAL
9	794503	794503	1	STEP TREAD DECAL
10	797845	797845	1	FUSION DECAL
11	602562	602562	2	DECAL, NO SERVICE

### **NOTES:**

---

**NOTES:**

---

# Numerical Index

Part No.	Page No.	Part No.	Page No.	Part No.	Page No.
<b>Index</b>					
<b>Part Numbers</b>					
000323	5-7	050161	5-3	107920	5-9
000331	5-7, 8-7, 8-9, 8-11	051169	8-3	107933	7-11, 7-13
000430	5-9	052860	2-3, 7-3, 8-7, 8-9, 8-11	107945	7-17
005116	4-7, 7-3	053199	4-7, 7-3, 7-9, 7-11, 7-13	107946	7-17
008193	4-11			107972	7-9, 7-11, 7-13
008573	3-3	054502	4-7	107973	7-9, 7-11, 7-13
012005	7-18, 7-19	055749	4-5, 8-3	107975	7-9, 7-11, 7-13
015495	4-5, 4-11, 7-3, 7-9, 7-11, 7-13	055822	4-7, 5-7	107978	7-9, 7-11, 7-13
015511	6-4, 6-5	055939	4-3	108066	7-13
015818	5-7	055947	3-3, 3-7, 5-3, 5-9	108093	2-2
016253	7-9, 7-11, 7-13	057661	5-3	108320	7-7
016527	5-3, 7-5, 7-15, 7-17	058776	4-3, 5-3, 7-5, 7-9, 7-11, 7-13, 7-15, 7-17	108575	7-7
016972	7-5, 7-15, 7-17			108577	7-7
017004	5-3	059832	4-7, 5-9	108607	7-3
017129	8-9	059931	7-17	108619	7-3
018846	4-5	061077	6-6	108627	7-3
019521	6-4, 6-6	061101	4-11, 6-3, 8-3	108851	8-7, 8-9
023317	8-13	061812	8-13	109274	8-7, 8-9
023655	4-7, 4-9	063198	4-7	109283	8-7, 8-9
024927	4-3, 5-3	064006	5-3	109307	8-7, 8-9
025007	7-5	064014	4-7	109482	7-9, 7-11
025296	4-11, 6-3, 8-3	064337	4-7	109483	7-9, 7-11
025395	7-3, 7-7, 7-13	065516	4-7	109486	7-9, 7-11
028118	4-11, 7-5, 7-15, 7-17	068239	6-7	109487	7-9, 7-11
029751	7-7	068478	1-1	109490	7-9, 7-11
029868	4-3	068551	4-7	109491	7-9, 7-11
029876	4-7, 5-3	070037	7-3	109549	7-15
029934	7-15, 7-17	077123	7-18, 7-19	109678	2-2
030817	5-3	077859	8-13	109948	7-15
031997	6-7, 7-3, 7-9, 7-11, 7-13	080358	8-7, 8-9, 8-11	110441	7-9
032763	3-3, 3-7	083196	4-11	110448	7-15
032771	3-3, 3-7	083279	9-3	110449	7-15
034272	3-3, 3-7, 4-3, 4-5, 4-7, 4-11, 5-3, 8-7, 8-9, 8-11	086660	2-3, 4-7, 4-9, 7-3, 7-7, 7-9, 7-11, 7-13, 8-7, 8-9, 8-11	212076	4-11
034280	7-5, 7-15, 7-17, 8-7, 8-9	101766	4-7	212472	7-5, 7-15, 7-17
034843	7-18, 7-19	102707	5-9	212472	7-5, 7-15, 7-17
036236	4-7, 4-11, 5-3	103010	7-3	259812	7-15
036244	4-7, 4-9, 5-7, 7-9, 7-11, 7-13, 8-7, 8-9, 8-11	103184	7-3	305615	2-3
037887	7-9, 7-11	103986	7-5	314104	7-3
039677	6-4, 6-5	103994	7-5	325308	4-11
041475	6-3	106039	2-2	344267	6-3
041707	3-3, 3-7	106211	2-2	347443	7-5
044255	5-3	106591	7-13	347989	5-7
045765	6-3	106633	5-9	348318	4-5
045898	5-9	106666	7-13	348391	4-5
		106724	7-13	348417	4-3
		106732	2-2, 5-7	348458	4-5
		107640	7-3	348714	4-9
		107701	2-2	348755	4-9
				348797	4-7
				348862	4-9
				348888	4-9
				348946	4-9
				348987	4-7

Part No.	Page No.	Part No.	Page No.	Part No.	Page No.
349266	6-3	601113	7-13	727172	9-6
349704	5-3, 8-13	601133	3-3	727420CE	9-4, 9-5
349761	4-11	601134	3-3	727438CE	9-4, 9-5, 9-6
349803	7-9, 7-11, 7-13	601216	5-3	727453CE	9-4, 9-5, 9-6
349860	3-3, 3-7	601238	6-6	727756	3-8
350041	8-11	601252	3-3	740696	4-3
350264	4-7	601289	4-7	744276	4-3
350272	4-7	601290	4-7	747741	6-4
350330	4-7	601311	4-11	747782	6-3
350371	5-3	601434	7-5, 7-17	747832	6-4
350397	4-7	601440	8-13	748756	8-11
350421	8-7, 8-9, 8-11	601444	8-9	750414	7-3
350462	8-11	601470	8-13	752386	7-5, 7-15, 7-17
350884	7-5, 7-17	601471	8-13	756270	4-5
359547	2-3, 9-4, 9-5	601472	8-13	762195	5-9
360693	5-3	601473	8-13	763946	3-3, 3-7
366443	5-3	601483	7-9, 7-11	763953	3-3, 3-7
366765	4-11	601560	8-13	765339	4-7
367557	4-7	601630	7-5, 7-15	766204	7-18, 7-19
373191	7-5, 7-17	601652	1-1	767464	8-9, 8-11
387035	6-3	601653	1-1	767954	2-3, 4-7, 4-9, 5-7, 7-3, 7-7, 7-9, 7-11, 7-13, 8-7, 8-9, 8-11
395533	2-3	601779	7-15		
547752	2-2	601819	7-15		
547760	2-2	601983	7-5	767962	3-3, 4-11, 5-3, 5-7, 6-7, 7-3, 7-5, 7-9, 7-11, 7-13, 7-15, 7-17, 8-13
547950	2-2	602202	8-7		
548032	2-2	602382	3-3		
548545	2-2	602562	9-4, 9-5, 9-6		
548636CE	3-3, 3-7	603128	8-7	768127	4-11
548644CE	7-11, 7-13	603129	8-7	768333	3-3, 3-7
549303	2-2	603130	8-7	768341	1-1, 3-3, 3-7
549733	7-9	603131	8-7	768515	3-3, 3-7, 4-7, 5-3, 5-9
600171	7-5, 7-17	603133	8-7	768523	3-3, 3-7, 4-3, 4-7, 4-9, 4-11, 5-3, 7-5, 7-9, 7-11, 7-13, 7-15, 7-17, 8-7, 8-9, 8-11
600189	7-5, 7-17	603134	8-7		
600221	4-7	603151	8-7		
600296	7-15	704163	4-7	768705	4-11
600437	4-5	704635	8-9	769166	5-9
600893	7-18, 7-19	704643	4-5, 8-3	769257	7-5
600913	3-3	704742	3-3, 3-7	770859	6-6
600915	3-3	704759	7-15	770867	7-15
600922	3-3	704932	5-9	771428	4-3, 5-3
600923	4-7	705178	4-9	771436CE	9-3
600924	4-7	705186	3-3, 3-7	772079	1-1
600925	4-7	705954	4-11, 5-7, 6-3, 7-5	776310	9-3
600961	2-2	710194	7-9, 7-11	776476	5-9
600994	7-9, 7-11, 7-13	712257	5-9	777029CE	9-3
601012	1-1, 7-15, 7-17	712919	5-7	777656	5-3
601013	1-1, 7-15, 7-17	712927	8-7	778365	5-9
601015	1-1, 7-15, 7-17	712976	6-3	778399	7-9, 7-11, 7-13
601016	4-11	714998	5-9	778423	1-1
601017	7-9, 7-11, 7-13	720177	5-3	778985	3-7
601053	5-9	722199	8-7, 8-9, 8-11	779132	3-3, 3-7
601069	7-9, 7-11, 7-13	724716	8-7, 8-9, 8-11	779280CE	9-3
601089	5-9	727008CE	9-3	779306	5-7
601098	5-9	727016CE	9-3		

Part No.	Page No.	Part No.	Page No.	Part No.	Page No.
779850	4-3	781922	4-7	793349	8-9, 8-11
779876	4-11	782078	6-6	793356	8-9, 8-11
780841	5-3	782086	6-6	793588	9-3
781047	3-7	782284	6-6	793661	8-9, 8-11
781054	3-7	782474	7-5, 7-15, 7-17	794446	7-15, 7-17
781062	3-7	782649	5-3	794503	9-6
781112	4-7	782664	5-3	794610	8-9
781153	4-9	782763	5-3	794685	1-1
781211	4-7	782771	6-4, 6-5	796219	4-3
781229	4-5	782979	4-7	796227	7-18
781237	6-6	782995	4-5	796235X	7-5, 7-15, 7-17
781245	6-6	783001	4-5	796250	6-6
781252	6-6	783738	7-5, 7-15, 7-17	796524	5-3
781260	4-9	783829	4-11	796680X	7-15, 7-17
781286	4-7	783910	8-7, 8-9	796698	7-19
781294	4-5	784223	6-3	796714	7-15, 7-17
781302	7-5, 7-15, 7-17	784702CE	9-3	796722	7-15, 7-17
781351	4-7	785030	5-9	796953	9-6
781385	7-5	785261	1-1	797035	5-7
781419CE	9-5	785279	1-1	797076	8-9
781427CE	9-3	785659	4-11	797084	5-7
781443	1-1, 4-11	785741	5-3	797449	7-5
781469	3-7	785808	5-9	797456	8-9, 8-11
781476	3-3, 3-7	786038	5-3	797472	8-9, 8-11
781484	3-3, 3-7	786277	9-4	797480	8-9, 8-11
781492	3-7	786335	7-5, 7-17	797654	4-11
781500	3-3, 3-7	786426	9-3	797696	1-1
781518	3-3, 3-7	786673	5-3	797704	7-5
781526	3-3, 3-7	787366	4-11	797720	1-1
781534	3-3, 3-7	788166	7-3, 7-9, 7-11, 7-13	797845	9-6
781542	3-3, 3-7	788943	5-3	797910	7-5, 7-15, 7-17
781559	3-7	789131	5-3	797928	1-1, 7-5
781567	6-7, 7-3, 7-9, 7-11, 7-13, 7-15	789537	6-3	798694	7-3
781575	3-3, 3-7	789685CE	9-4, 9-5, 9-6	798967	7-5, 7-15, 7-17
781583	4-9	789701CE	9-3, 9-4, 9-5, 9-6	799171	9-5, 9-6
781591	3-3, 3-7	789719CE	9-3, 9-4, 9-5, 9-6	799312	5-3
781617	8-7, 8-9, 8-11	789727CE	9-3	799320	5-3, 5-9
781658	3-3, 3-7	789776CE	9-3	799353	9-4, 9-5
781708	7-3, 7-9, 7-11, 7-13	791251	4-11	799395CE	9-4
781716	4-7, 4-9	791830	9-3	799411CE	1-1
781724	5-3	792192	5-3	808477	2-2
781732	5-3	792762	5-3	808485	7-3
781765	4-7	793232	5-7	808493	2-2, 7-3
781831	4-5	793240	5-7	927723CE	1-1
781856	4-11, 7-5	793273	8-9, 8-11	927731CE	1-1
781872	4-11	793307	8-9, 8-11	928432CE	1-1
781880	2-3, 8-7, 8-9, 8-11	793315	8-9, 8-11		
		793331	8-9, 8-11		